



RETAIL CATALOG



Our products work harder
so your stores work better

Making retail spaces work better for over 30 years!



Systems Protector, pg. 48



Edge Bumper, pg. 10



Stainless Steel Square Rail, pg. 32



Cart Magnet, pg. 62



BumperSign, 8R pg. 72

Contents

McCue Bumper

1" Bumper	4
2" Bumper	6
StreamLine – 2" Low Profile Rigid & Flexible Bumper	8
Edge – 2" Low Profile Rigid & Flexible Edge Bumper	10
2" Stainless Steel Bumper	12
GreenGuard™ 3	14
GreenGuard™ 8	16
CartGuard V	18

Corner Protection

Corner Guard Standard	22
Corner Guard Stainless	24
FlexCore Post 3	26

Sales Area Rail Systems

CartStop® RE	30
CartStop® Stainless Steel Rail	32
CartStop® Stainless Steel Square Rail	34
Guidance Rail	36

Back Room

FlexCore® Bollard	40
Box Rail	42
Rack Mounted Guard	44
Shock-Absorbing Rack Guard	45
Loading Door Protector (LDP)	46
Systems Protector	48
Post & Bollard Cover	50

Cart Corrals & More

CartMagnet™ Cart Corral	54
CartMagnet® Sidewalk	56
CartPark® Bumper	58
CartPark® Bumper Accessories	60
Bollard CartMagnet™	62
CartPark® Covered	64
Personalized Cart Corral Design	66

Safety Bollards & Signs

CrashCore Bollard	68
BumperSign	70
BumperSign 8R	72

About McCue

How To Order	74
--------------	----

For more information or to place an order, call us at 800.800.8503

OUR 2" BUMPER JUST HIT THE GYM!

Check out our new, slimmer bumper. Refresh your fixtures with a streamline look with slim corners & ends. Practical, low profile design saves space to free up your retail area. With these new options, we have a bumper to fit all your needs.

Meet the newest faces of McCue Bumper!

Requested by retailers. Designed for manufacturers.



StreamLine Flex pg. 8



Edge pg. 10



Stainless Steel pg. 12



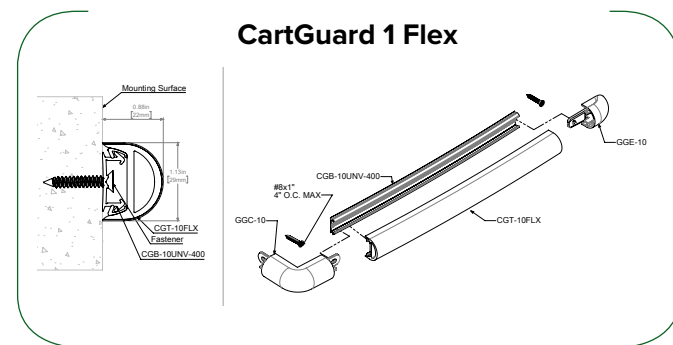
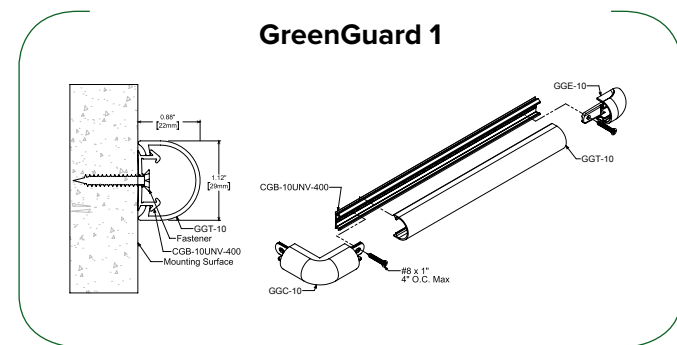
StreamLine pg. 8

1" Bumper

1-Inch Rigid GreenGuard and Flexible CartGuard Bumper

Our impact-resistant protective bumper provides superior impact performance and delivers simply beautiful aesthetics. A modular system—consisting of top rail, mounting base and a variety of end and corner options—ensures a great fit in any retail configuration. Flexible option available, designed to fit rounded fixture corners for strong, seamless protection.

- All McCue Bumper is designed to absorb impacts and keep your walls and fixtures looking new
- All parts snap together easily, making installation a breeze
- CartGuard® 1 Flex Bumper can fit a radius as small as 4"

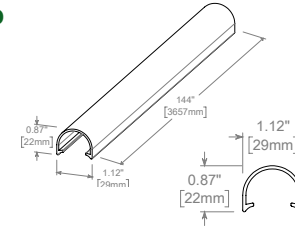


Rigid GreenGuard 1" Top

GGT-10-COLOR

Sold in 12' lengths

Packed: 24 per box (288' total)

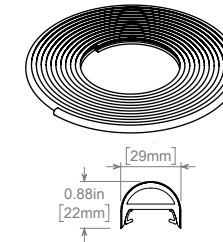


Flexible CartGuard 1" Top

CGT-10FLX-COLOR

Sold in 72' lengths

Packed: (3) 72' coils (216' total)



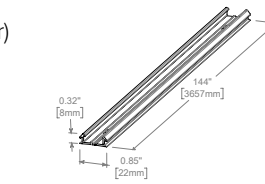
1" Mounting Base

CGB-10UNV-400

(For both rigid and flexible bumper)

Sold in 12' lengths

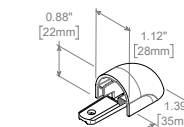
Packed: 24 per box (288' total)



1" Snap-on End Cap

GGE-10-COLOR

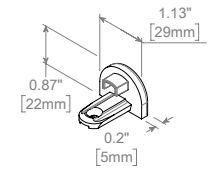
Packed: 50 per box



1" Quick Stop End Cap

GGE-10DS-COLOR

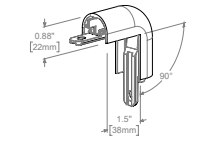
Packed: 50 per box



1" Snap-on 90° Corner

GGC-10-COLOR

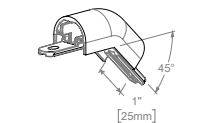
Packed: 25 per box



1" Snap-on 135° Corner

GGC-10.45-COLOR

Packed: 25 per box



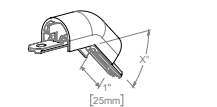
1" Snap-on Custom Corner

GGC-10-CUSTOM CORNERS

Metal-reinforced corners made to order for fixture angles between 95°–175°

10 piece minimum

Custom Corner Lead Time: 3 weeks. Custom Colors 4 weeks



Custom Color Matching

Pre-matched colors ship within 3 weeks. Otherwise allow 6-8 weeks for delivery. Minimums may apply. Call for pricing.

401 Black	101 Gray
111 Silver	604 Light Caramel
601 Beige	602 Brown
609 Putty	801 White
501 Red	105 Steel Gray

GreenGuard Stock Colors

Available to **QuickShip** within 24 Hours. Please inquire about quantities greater than 2,880 feet.

GreenGuard Standard Colors

Available to ship within 1 week.



401 Black

CartGuard Flex Stock Colors

Available to **QuickShip** within 24 Hours. Please inquire about quantities greater than 2,880 feet.



601 Beige



602 Brown

CartGuard Flex Standard Colors

Available to ship within 1 week.



111 Silver



101 Gray



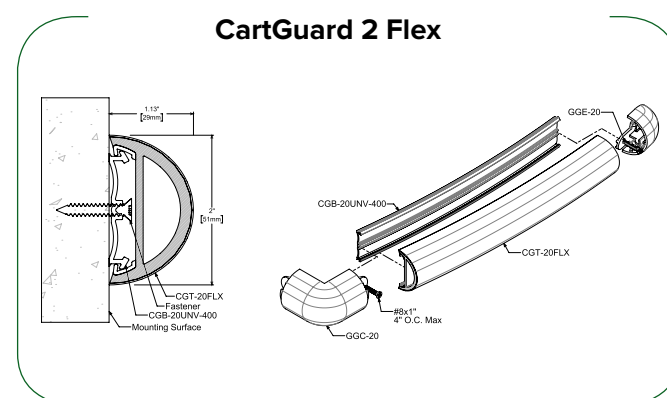
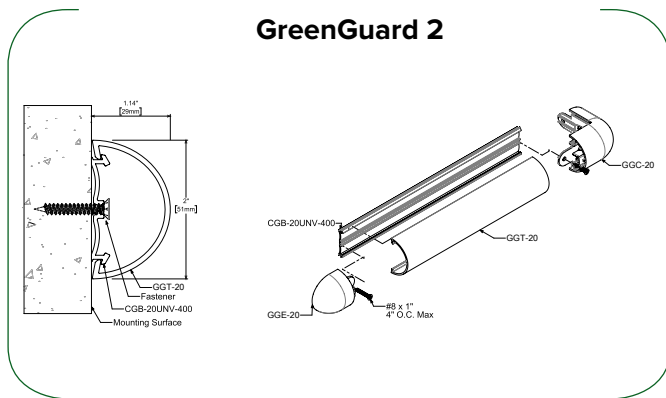
501 Red

2" Bumper

2-Inch Rigid GreenGuard and Flexible CartGuard Bumper

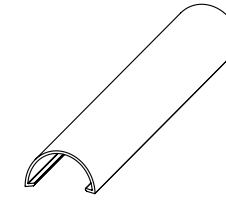
Our 2" protective bumper provides superior impact performance, delivers simply beautiful aesthetics. A modular system—consisting of top rail, mounting base and a variety of end and corner options—ensures a great fit in any configuration. Also available in a flexible option, designed to fit rounded fixture corners.

- GreenGuard™ 2 is designed to absorb impacts and keep your walls and fixtures looking new
- All parts snap together easily, making installation a breeze
- Flexible Bumper can fit a radius as small as 4"



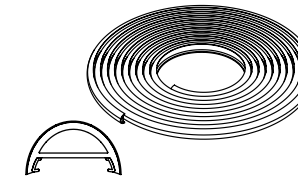
Rigid GreenGuard 2" Top

GGT-20-COLOR
Sold in 12' lengths
Packed: 24 per box (288' total)



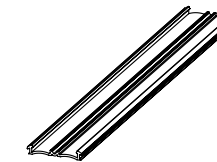
Flexible CartGuard 2" Top

CGT-20FLX-COLOR
Sold in 72' length coils
Packed: 72' coil per box



2" Mounting Base

CGB-20UNV-400
(For both rigid and flexible bumper)
Sold in 12' lengths



2" Snap-on End Cap

GGE-20-COLOR
Packed: 50 per box



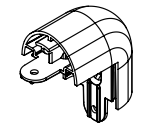
2" Quick Stop End Cap

GGE-20DS-COLOR
Packed: 50 per box



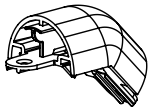
2" Snap-on 90° Corner

GGC-20-COLOR
Packed: 25 per box



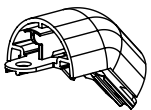
2" Snap-on 135° Corner

GGC-20.45-COLOR
Packed: 25 per box



2" Snap-on Custom Corner

GGC-20-CUSTOM CORNER
Metal-reinforced corners made to order for fixture angles between 95°–175°
10 piece minimum
Custom Corner Lead Time: Stock and Standard Colors 3 weeks. Custom Colors 4 weeks



Custom Color Matching

Pre-matched colors ship within 3 weeks. Otherwise allow 6-8 weeks for delivery. Minimums may apply. Call for pricing.

GreenGuard 2 Stock Colors
Available to **QuickShip** within 24 Hours. Please inquire about quantities greater than 2,880 feet.

- 609 Putty
- 401 Black
- 111 Silver
- 101 Gray

GreenGuard 2 Standard Colors
Available to ship within 1 week.

- 501 Red
- 602 Brown
- 701 Blue
- 105 Steel Gray
- 604 Light Caramel

CartGuard 2 Flex Stock Colors
Available to **QuickShip** within 24 Hours. Please inquire about quantities greater than 2,880 feet.

- 401 Black

CartGuard 2 Flex Standard Colors
Available to ship within 1 week.

- 111 Silver
- 105 Steel Gray
- 201 Green
- 101 Gray
- 501 Red
- 601 Beige
- 604 Light Caramel

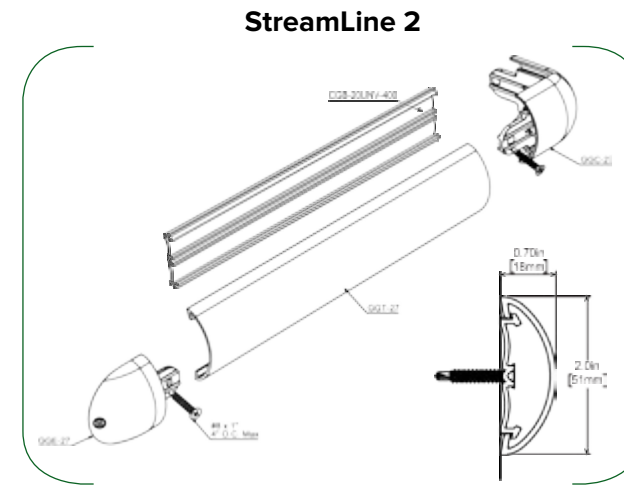
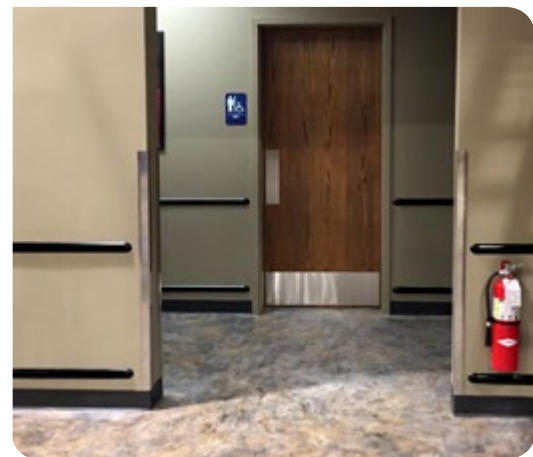
StreamLine

2" Low Profile Rigid & Flexible Bumper

A sleek, slim bumper made from recyclable polycarbonate that provides the same impact performance as GreenGuard, while delivering a beautiful streamline aesthetic. Attaches to the same universal mounting base as our existing 2" bumper.

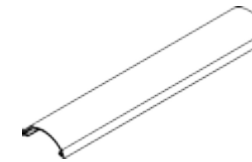
- Refresh your fixtures with a streamline look with slim corners & ends
- Low profile design saves space to free up your retail area
- Flexible option designed to curve around a radius as small as 3"

**38%
SLIMMER!**



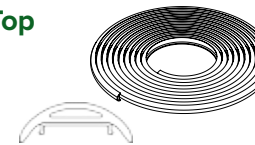
StreamLine 2" Top

GGT-27-COLOR
Sold in 12' lengths
Packed: 24 per box (288' total)



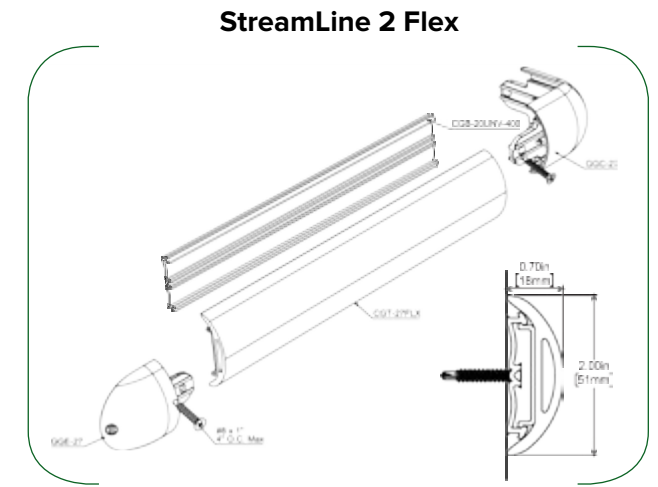
Flexible StreamLine 2" Top

CGT-27FLX-COLOR
Sold in 72' length coils
Packed: 72' coil per box



2" Mounting Base

CGB-20UNV-400
Sold in 12' lengths
Packed: 24 per box (288' total)



2" Snap-on End Cap

GGE-27-COLOR
Packed: 50 per box



2" Snap-on 90° Corner

GGC-27-COLOR
Packed: 25 per box



Standard Colors
Available to ship within 1 week.



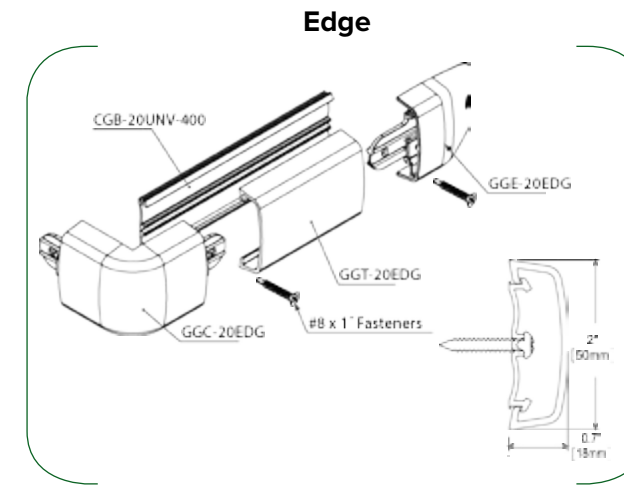
Custom Color Matching
Pre-matched colors ship within 4-6 weeks. Otherwise allow 6-8 weeks for delivery. Minimums may apply. Call for pricing.

Edge

2" Low Profile Rigid & Flexible Edge Bumper

Our new, rectangular bumper offers a sophisticated, streamlined look – a sleek, modern choice. Made from polycarbonate, it diffuses shock from impacts, is entirely maintenance free and attaches to the same 2" universal mounting base, making it easy to swap styles.

- A whole new look for 2" bumper
- Entirely modular, with each piece snapping together on our 2" universal mounting base for easy installation



Edge 2" Top

GGT-20EDG-COLOR
Sold in 12' lengths
Packed: 24 per box (288' total)



2" Snap-on End Cap

GGE-20EDG-COLOR
Packed: 50 per box



2" Mounting Base

CGB-20UNV-400
Sold in 12' lengths
Packed: 24 per box (288' total)



2" Snap-on 90° Corner

GGC-20EDG-COLOR
Packed: 25 per box



Standard Edge Colors
Available to ship within 1 week.



Standard Edge Flex Colors
Available to ship within 3 weeks.



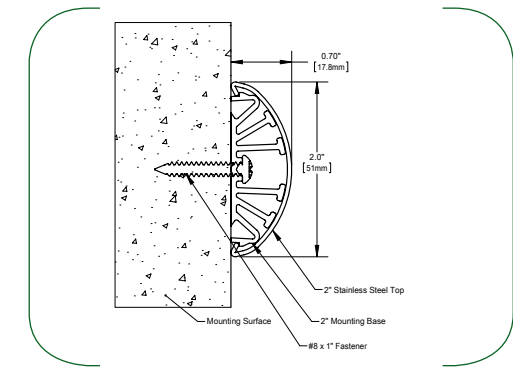
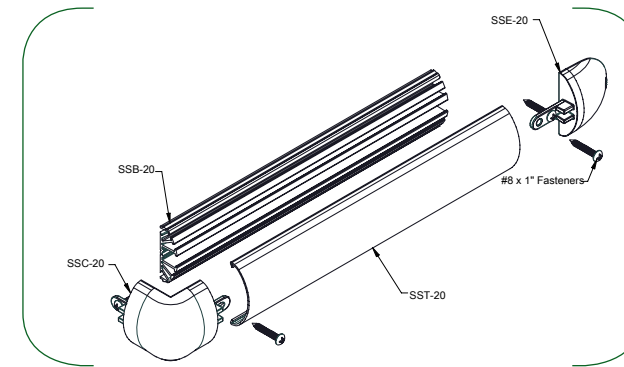
Custom Color Matching
Pre-matched colors ship within 4-6 weeks. Otherwise allow 6-8 weeks for delivery. Minimums may apply. Call for pricing.

Stainless Steel Bumper

2" Stainless Steel Bumper

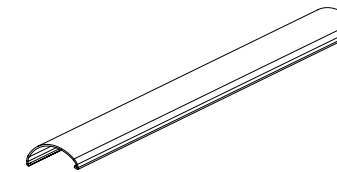
Using a shock-diffusing foundation, we designed a modern, seamless, stainless steel bumper system. It installs in minutes, sits flush to the wall, requires no maintenance, and resists everything from fingerprints, to rust, to direct hits by carts.

- Smooth, seamless, brushed stainless steel gives a contemporary aesthetic to your space—perfect for retail environments, grocery stores, airports and hospitals
- When cut to length, it installs into virtually any space using only a drill and a screwdriver, with all hardware cleverly covered by the stainless steel faceplate
- Brute impact forces are distributed along the face of the steel bumper and transferred to the polycarbonate foundation
- Safe for all applications; made with food grade 304 stainless steel.



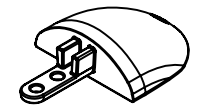
Stainless Steel 2" Top

SST-20
Sold in 8' lengths
Packed: 6 per box



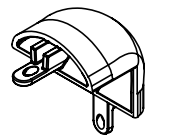
Stainless Steel 2" End Cap

SSE-20



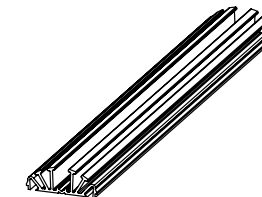
Stainless Steel 2" Snap-on 90° Corner

SSC-20



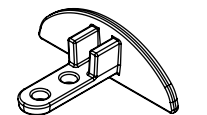
2" Mounting Base

SSB-20
Sold in 8' lengths
Packed: 6 per box



Stainless Steel 2" Quick Stop End Cap

SSE-20DS



Lead Times & Custom Lengths

Lead time is 3 weeks.

For custom cut lengths, please call for lead time and additional cut/finishing fees will apply.

What our customers are saying about the Stainless Steel Bumper

"We've had the new Stainless Steel Bumper installed at our stores for quite some time now, and it looks just as good today as the day it was installed. It's beautiful!"

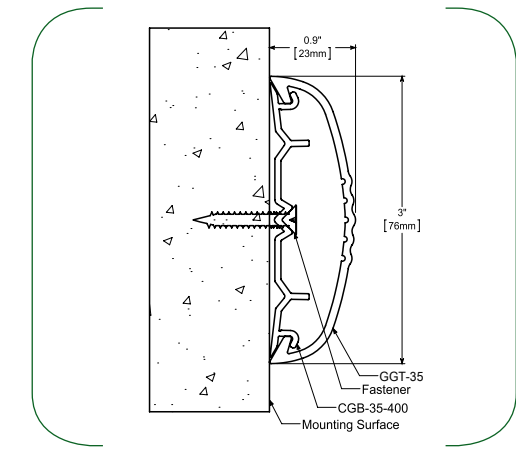
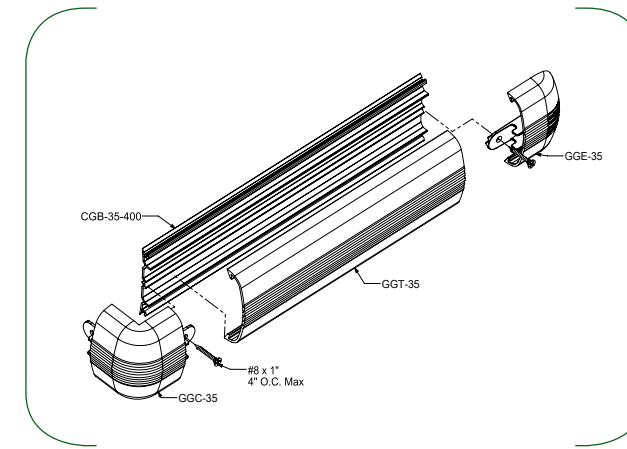
"This stuff is awesome. Looks amazing, and has been incredibly durable. What a perfect combination!"

GreenGuard™ 3

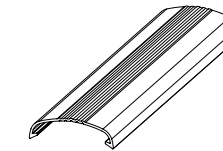
3-Inch Rigid Bumper

GreenGuard protective bumper provides superior impact performance, delivers simply beautiful aesthetics. A modular system—consisting of top rail, mounting base and a variety of end and corner options—ensures a great fit in any configuration. GreenGuard 3 provides superior protection with a striking, ribbed aesthetic to hide scratches.

- McCue Bumper is designed to absorb impacts
- All parts snap together easily, making installation a breeze
- Parts align tightly and won't shrink, ensuring a lasting, polished look



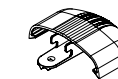
Rigid GreenGuard 3" Top
GGT-35-COLOR
Sold in 12' lengths
Packed: 12 per box (144' total)



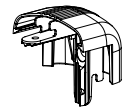
3" Mounting Base
CGB-35-400
Sold in 12' lengths
Packed: 12 per box (144' total)



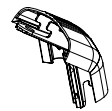
3" Snap-on End Cap
GGE-35-COLOR
Packed: 50 per box



3" Snap-on 90° Corner
GGC-35-COLOR
Packed: 25 per box



3" Snap-on Custom Corner
GGC-35-CUSTOM



Metal-reinforced corners made to order for fixture angles between 95°–175°
10 piece minimum
Custom Corner Lead Time: Stock and Standard Colors 3 weeks. Custom Colors 4 weeks

- | | | | |
|--|----------------|-----------|--|
| 101 Gray | 105 Steel Gray | 401 Black | Stock Colors
Available to QuickShip within 24 Hours. Please inquire about quantities greater than 2,880'. |
| 111 Silver | 501 Red | 601 Beige | |
| Standard Colors
Available to ship within 1 week. | | | |

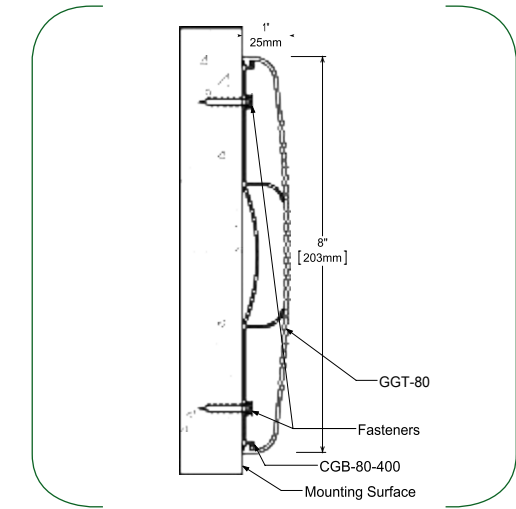
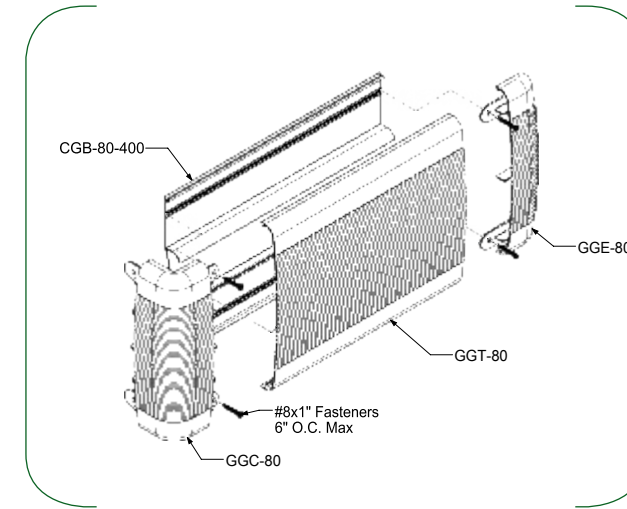
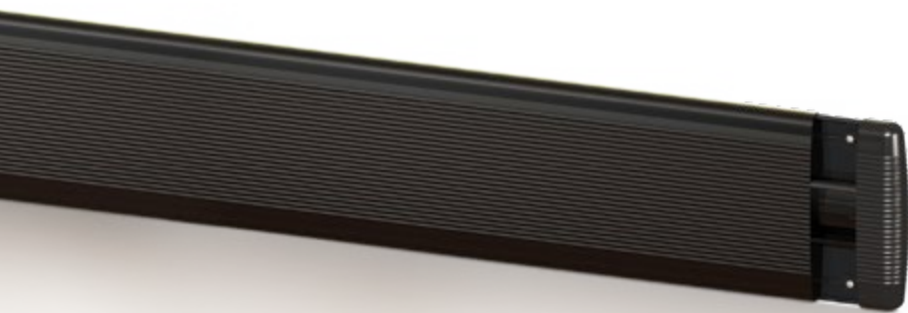
Custom Color Matching
Pre-matched colors ship within 3 weeks. Otherwise allow 6-8 weeks for delivery. Minimums may apply. Call for pricing.

GreenGuard™ 8

8-Inch Rigid Bumper

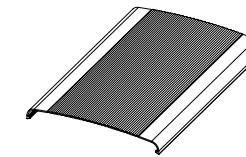
GreenGuard protective bumper provides superior impact performance, delivers simply beautiful aesthetics. A modular system—consisting of top rail, mounting base and a variety of end and corner options—ensures a great fit in any configuration. GreenGuard 8 is our widest bumper profile designed for maximum wall protection and styled with ribs to resist scratching.

- All parts snap together easily, making installation a breeze
- Parts align tightly and won't shrink, ensuring a lasting, polished look



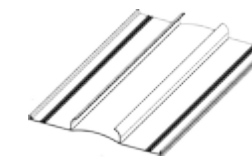
Rigid GreenGuard 8" Top

GGT-80-COLOR
Sold in 12' lengths
Packed: 10 per box (120' total)



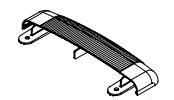
8" Mounting Base

CGB-80-400
Sold in 12' lengths
Packed: 10 per box (120' total)



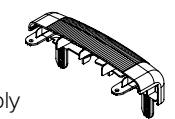
8" Snap-on End Cap

GGE-80-COLOR
Packed: 60 per box
Minimum quantity and lead times may apply



8" Snap-on 90° Corner

GGC-80-COLOR
Packed: 40 per box
Minimum quantity and lead times may apply



Stock Colors
Available to **QuickShip** within 24 Hours. Please inquire about quantities greater than 2,880 feet.



Standard Colors
Available to ship within 1 week.



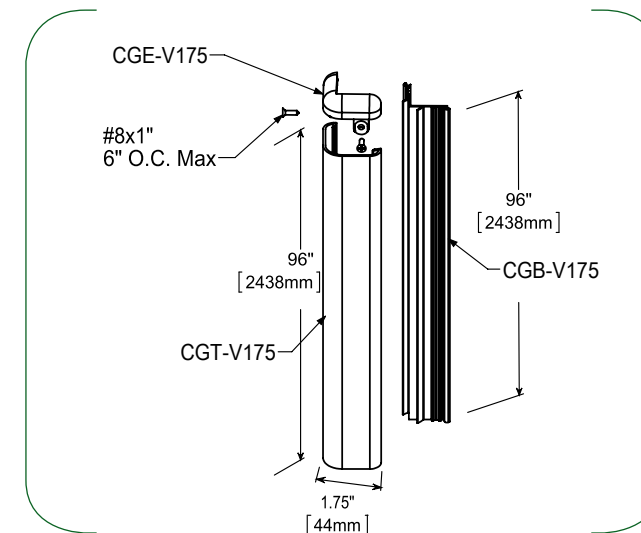
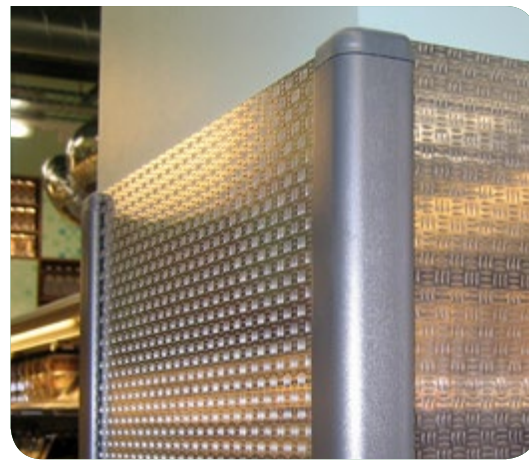
Custom Color Matching
Pre-matched colors ship within 3 weeks. Otherwise allow 6-8 weeks for delivery. Minimums may apply. Call for pricing.

CartGuard V

Vertical Bumper System

Whether you're trying to protect new or existing walls, columns, millwork corners or just trying to cover up old damage, CartGuard Vertical Bumper gets the job done quickly and easily. It's a simple and economical solution for vertical corner protection.

- Impact absorbing rigid PVC takes the hit and redistributes impact energy away from fixtures and walls
- All parts snap together for easy installation and guaranteed alignment
- Won't rust or corrode like metal corner guards—perfect for areas frequently subjected to moisture and cleaning chemicals

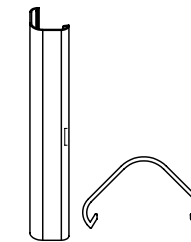


1.75" Vertical Corner Trim Rigid Top

CGT-V175-COLOR

Sold in 8' lengths

Packed: 24 per box (192' total)

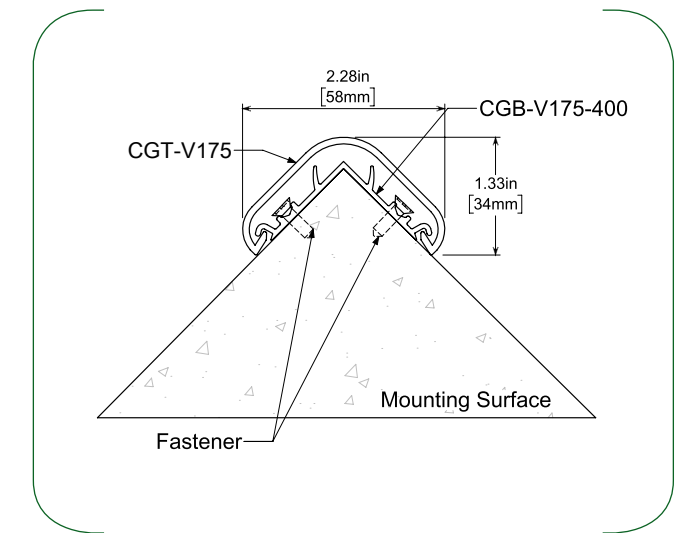
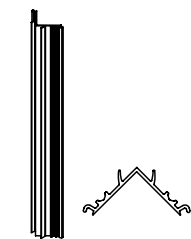


1.75" Vertical Corner Mountain Base

CGB-V175-400

Sold in 8' lengths

Packed: 24 per box (192' total)



Rigid Vertical Corner End Cap

CGE-V175-COLOR

Packed: 25 per box



Standard Colors
Available to ship within 1 week.



Custom Color Matching
Pre-matched colors ship within 3 weeks. Otherwise allow 6-8 weeks for delivery. Minimums may apply. Call for pricing.

ALL THE RIGHT ANGLES.

Here's the thing about carts and corners—they have a tendency to collide. That's why we engineered our corner protection to deflect glancing blows and absorb direct hits. With an extensive range of smartly designed options—and exclusive features like built-in wrenches for easy removal and replacement when cleaning—they add style to your store and provide unparalleled level of protection and peace of mind.

Smart

Get the lowdown on stopping damage.

Whatever's going to make impact—a rogue shopping cart or a drifting pallet jack—the frame always hits first. That's why McCue corner protection stays low to the ground—halting impacts at the frame and preventing damage to your fixtures and equipment.



Removable

What goes in, must come out.

We designed our corner protection to install easily, and just as importantly, to uninstall easily. That means it can be removed quickly for a more thorough cleaning of your store, or for maintenance and repairs of the fixture or refrigeration system it's protecting.



Slim

Keep a low profile when it counts.

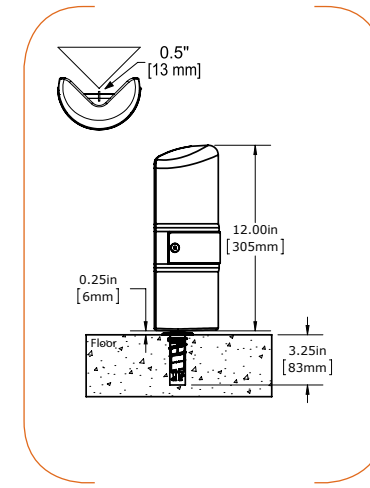
Sleek designs make for minimal footprints, which gives your store back its space. Set tight against the fixture, our corner protection reduces tripping hazards and minimizes hits. All products are lean and mean—able to withstand the punishing retail environment.

Corner Guard Standard

Slim-Profile, Adjustable Corner Protection

Our corner guards protect valuable corners from damage. It mounts close to the case, eliminating tripping hazards. Additionally, it's easy to remove for thorough cleaning.

- Stainless steel strike plate located at primary impact zone
- Installs quickly and securely with our patented flange anchor system—eliminating messy adhesives
- Built-in wrench for quick removal and replacement to facilitate floor cleaning
- Patented twist-and-lock system allows adjustable stainless steel legs to expand or contract 1/4" in either direction for easy installation
- Integrated handle for easy carrying and positioning



12" Corner Guard
GARD-ADJ-12-COLOR
(2) Flange Anchor Kits Included



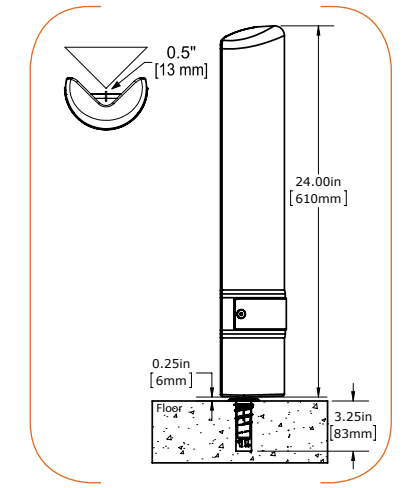
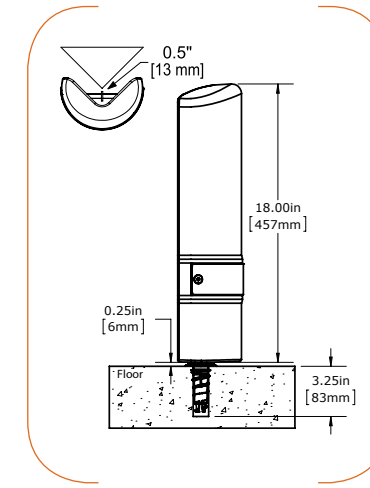
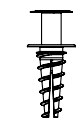
18" Corner Guard
GARD-ADJ-18-COLOR
(2) Flange Anchor Kits Included



24" Corner Guard
GARD-ADJ-24-COLOR
(2) Flange Anchor Kits Included



Flange Anchor Kit
CSFA-10-KIT
Stainless mounting sleeve and plastic anchor



DID YOU KNOW?

Legs adjust 1/4" in either direction for a perfect fit every time



Standard Colors
2 week lead for quantity 1-24.
Inquire for quantities 25 or more.



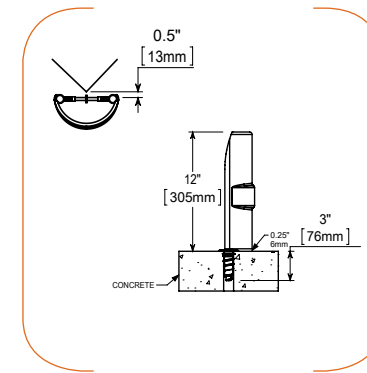
Custom Color Matching
Pre-matched colors ship within 3 weeks. Otherwise allow 6-8 weeks for delivery. Minimums may apply.

Corner Guard Stainless

Stainless Steel, Adjustable Corner Protection

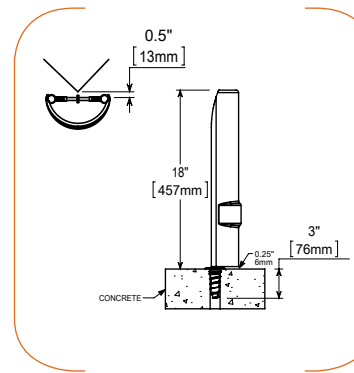
Our adjustable stainless steel corner guards provide the simple and clean look of stainless with the same scope of protection of our plastic corner guards. Installation is made easy with our patented, twist-and-lock technology.

- Full corner protection in three heights (12", 18" and 24")
- Patented twist-and-lock system allows adjustable legs to expand or contract 1/4" in either direction for easy installation
- Adjusts to lock down in the floor yet removes easily from its base for cleaning
- All stainless construction for maximum damage prevention
- Improved safety with rounded edges



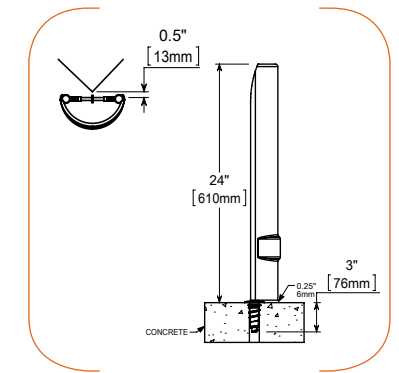
12" Adjustable Corner Guard GARD-12-SS

(2) Flange Anchor Kits included



18" Adjustable Corner Guard GARD-18-SS

(2) Flange Anchor Kits included



24" Adjustable Corner Guard GARD-24-SS

(2) Flange Anchor Kits included

Flange Anchor Kit CSFA-10-KIT

Stainless mounting sleeve and plastic anchor



DID YOU KNOW? 



Built-in wrench makes installation and removal for cleaning easy



Lead Times

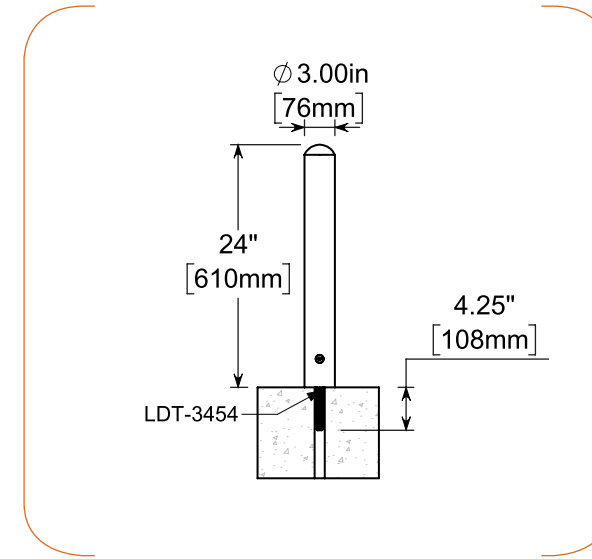
1 week lead for quantity 1-49.
Inquire for quantities 50 or more.

FlexCore Post 3

Impact-Absorbing, Stainless Steel Post

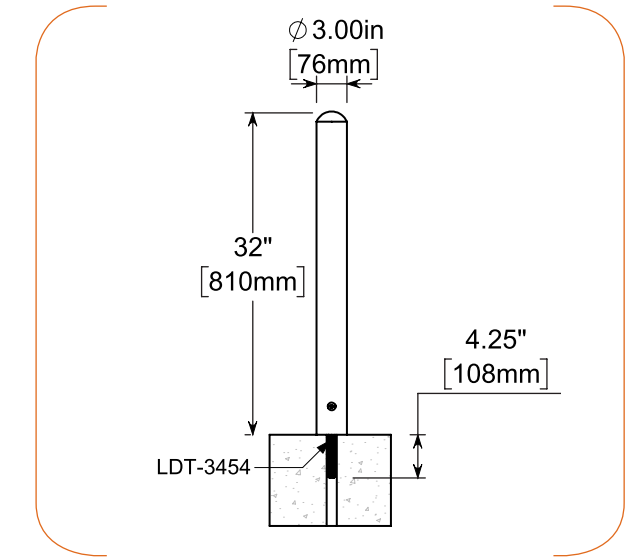
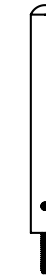
FlexCore Post 3 is ideal for retailers who want a simple, clean look without sacrificing strength. It's packed with impact-absorbing flex technology that takes big hits from a pallet or floor scrubber and still stands up straight. Use in place of plate-mounted bollards for improved performance and aesthetics.

- Impact-absorbing hidden core provides unprecedented strength
- Mounted with one high-strength concrete anchor for quick and easy installation
- Stainless Steel finish is classy and corrosion resistant



FlexCore Post 3, 24" Tall

CSFP-3-24-KIT
Material: Stainless steel
Hardware included
Packed: 1 per box



FlexCore Post 3, 32" Tall

CSFP-3-32-KIT
Material: Stainless steel
Hardware included
Packed: 1 per box



HOW IT WORKS

FlexCore Post's strength comes from its hidden core.

3/4 Inch Concrete Anchor

CS-HARDWARE-3454
5 inches long, self threading, and with anti-rotation serrations to prevent back-out
Red Head 3/4" x 5" LDT



2 week lead for quantity 1-49.
Inquire for quantities 50 or more.

THE CART STOPS HERE.

There's no driving school for shopping cart pushers, no license needed to operate a floor buffer, and no mandatory training to steer a pallet jack—which is where our rail systems come in. Engineered to deflect runaway carts, they absorb hits from viciously spinning scrubbers and diffuse direct impacts from heavy equipment. They provide all the protection your store needs to keep moving at the pace you demand.

Resilient

Takes a hit and still looks smashing.

Hit after hit, our rail protection never loses its good looks. Several versions feature an abrasion strip that fends off scuffs and scrapes, and metal versions keep its luster year after year—always looking new.



Customizable

Size it up and customize to your liking.

McCue rail protection is completely modular—fully customizable for your unique needs. Whatever the length, whatever the width, we've got you covered.

Effortless

From install to maintenance, nothing could be easier.

We make it truly effortless, with rail that installs in minutes, resists scuffs and cleans up with just a damp cloth. It can also be easily removed—a great convenience when a fixture or refrigerator requires service.

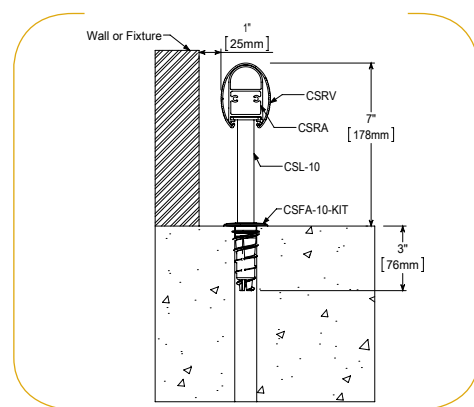
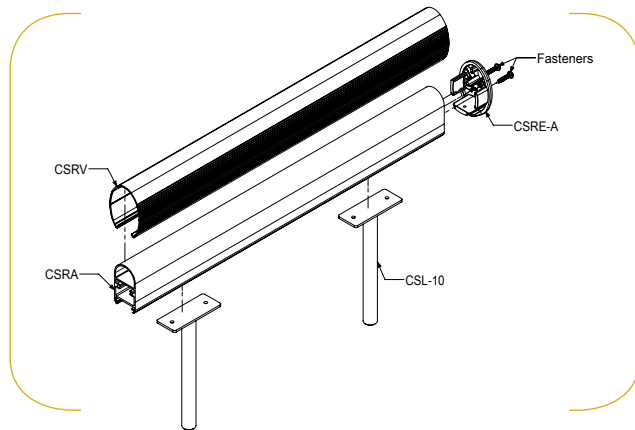


CartStop® RE

Reversible Elliptical Floor-Mounted Rail System

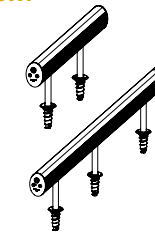
CartStop RE is attractive and provides reliable protection. The reversible cover dramatically extends the lifespan of the product. Just turn it over to keep it looking as new as the day it was installed.

- Tough rubber corners provide 90° of protection and eliminate the need for additional corner protection
- Absorbs and redistributes impact energy while stopping floor polishers, stock carts and pallet jacks
- Removable for easy cleaning



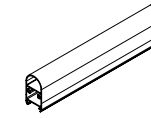
Pre-Assembled CartStop RE System

- CSR-4A-COLOR (4')
- CSR-8A-COLOR (8')
- CSR-12A-COLOR (12')



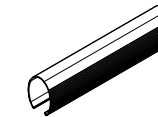
Aluminum Extrusion

- CSRA-143F
- Double Hollow Aluminum Channel
- Sold in 143" lengths



Bumper Cover

- CSRV-COLOR
- Sold in 12' lengths



Aluminum End Cap

- CSRE-A
- With Self Tapping Screws



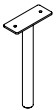
Black Rubber 90° Corner

- CSRC-RUB



Stainless Leg

- CSL-10
- Stainless Steel with set screws
- (CSFA-10-KIT required with CSL-10)

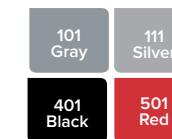


Flange Anchor Kit

- CSFA-10-KIT
- Stainless mounting sleeve and plastic anchor



Stock Colors
Available to ship within 2 weeks.



Standard Colors
Available to ship within 4 weeks.



Custom Color Matching
Pre-matched colors ship within 5 weeks. Otherwise allow 6-8 weeks for delivery. Minimums may apply.

CartStop® Stainless Steel Rail

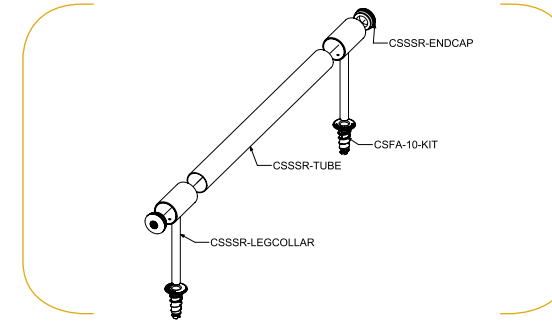
Stainless Steel Floor-Mounted Rail System

CartStop Stainless Steel Rail is ideal for the retailer who wants the simple, clean look of stainless steel without sacrificing strength. This floor-mounted rail keeps walls, cases and fixtures looking new.

- Brushed Stainless Steel finish blends into store decor
- Protects walls, cases and fixtures
- Semi-permanent installation allows for easy replacement
- Flange anchor and end caps allow for easy installation
- Absorbs and redistributes impact energy while stopping floor polishers, stock carts and pallet jacks

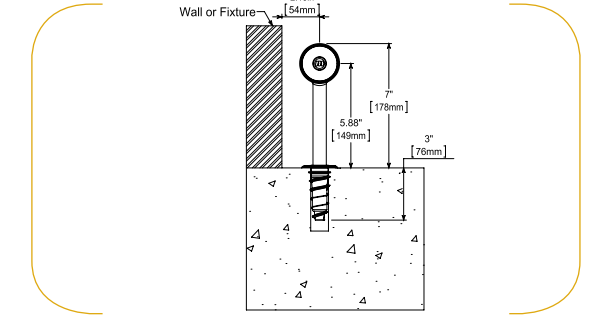
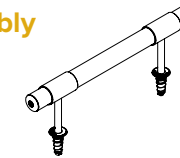
What our customers are saying about the Stainless Steel Rail

"We have seen a great ROI on utilizing McCue's Stainless Steel Rail to protect our refrigerated cases. The look and performance keep our stores looking new which gives the customers a great atmosphere to shop in!"



Stainless Steel Rail Assembly

CSSSR-8A (8')
CSSSR-12A (12')
(2) Flange Anchor Kits Included



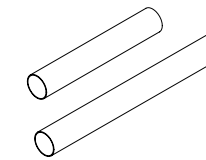
Connector

CSSSR-CONNECTOR
Nylon



Stainless Steel Tube

CSSSR-TUBE (8')
CSSSR-TUBE-12 (12')
Stainless Steel



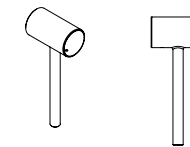
Plastic End Cap

CSSSR-ENDCAP
Polypropylene



CartStop Stainless Steel Legs

CSSSR-LEGCOLLAR
Stainless Steel



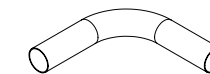
Flange Anchor Kit

CSFA-10-KIT
Stainless mounting sleeve & plastic anchor



90° Elbow

CSSSR-CORNER-90
Stainless Steel



Lead Times

All sizes - 1 week lead for quantity 1-24. Inquire for quantities 25 or more.

CartStop® Stainless Steel Square Rail

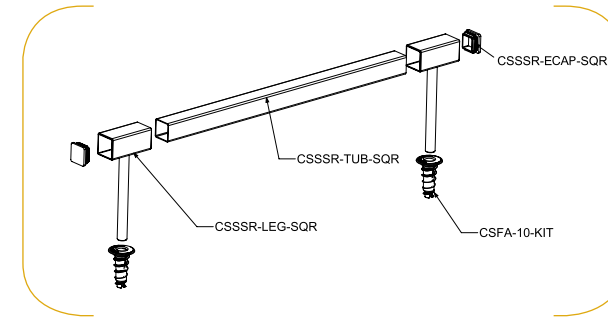
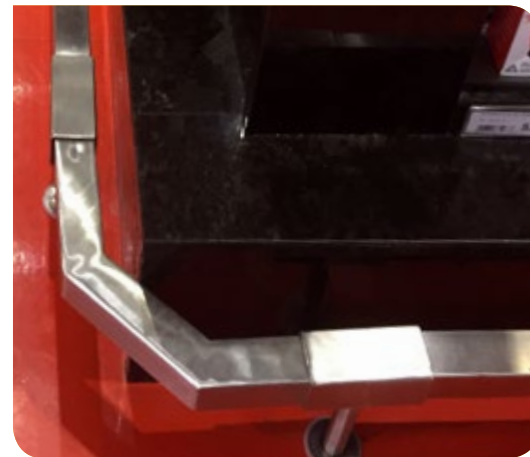
Square Stainless Steel Floor-Mounted Rail System

CartStop Stainless Steel Square is a modern choice for a retailer who wants the simple, clean look of stainless steel without sacrificing strength.

This floor-mounted rail keeps walls, cases and fixtures looking new.

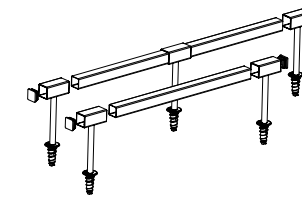
- Brushed Stainless Steel finish blends into store decor
- Protects walls, cases and fixtures
- Semi-permanent installation allows for easy replacement
- Flange anchor and end caps allow for easy installation

Stainless Steel Square Rail Option!



Square Rail Assembly

CSSSR-8A-SQR (8')
 CSSSR-12A-SQR (12')
 Flange Anchor Kits Included



Square Stainless Steel Rail

CSSSR-TUB-SQR (8')
 CSSSR-TUB-SQR-12 (12')
 Stainless Steel



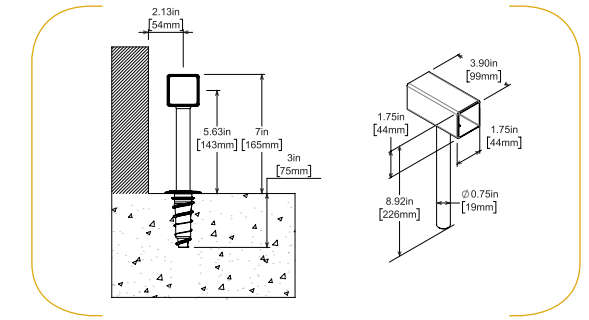
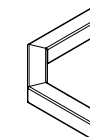
CartStop Stainless Steel Legs

CSSSR-LEG-SQR
 Stainless Steel



90° Corner

CSSSR-CNR-SQR
 Stainless Steel



Connector

CSSSR-CON-SQR
 Polypropylene



Plastic End Cap

CSSSR-ECAP-SQR
 Polypropylene



Flange Anchor Kit

CSFA-10-KIT
 Stainless mounting sleeve & plastic anchor



Lead Times

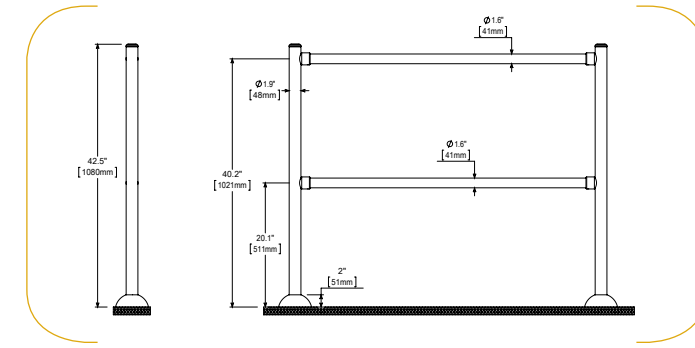
3 week lead for quantity 1-24. Inquire for quantities 25 or more.

Guidance Rail

Modular Guidance Rail System

Guidance Rail provides a superb modular guidance system to suit all retail store configurations. It's a perfect fit for customer queuing systems and in-store cart storage areas.

- No welding makes it easy to install
- Available in stainless steel or high quality chrome coated finish
- Each post is fixed to floor with 3 concrete anchors



Guidance Rail End Post

CSGR-V2-E-CHROME-KIT
CSGR-V2-E-SS-KIT

Hardware included



Guidance Rail Tube

CSGR-59-CHROME (59")
CSGR-68-CHROME (68")
CSGR-59-SS (59")
CSGR-68-SS (68")



Guidance Rail Middle Post

CSGR-V2-M-CHROME-KIT
CSGR-V2-M-SS-KIT

Hardware included



5/8 inch Concrete Anchor

CS-HARDWARE-5830

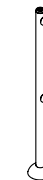
3 inches long, self threading



Guidance Rail Corner Post

CSGR-V2-C-CHROME-KIT
CSGR-V2-C-SS-KIT

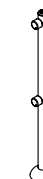
Hardware included



Guidance Rail "T" Post

CSGR-V2-T-CHROME-KIT
CSGR-V2-T-SS-KIT

Hardware included



Stock Finishes

Available to ship within 2 weeks.

WHAT HAPPENS IN THE BACK ROOM, MAKES ITS WAY TO THE FRONT ROOM.

Everybody knows the rules in the back room are different. Things move faster, the equipment's bigger, and the pace keeps up all day and night. We engineered our back room systems for the relentless way of life back there—built to install fast, protect every inch of space and requires no maintenance.

Impact-absorbing

Takes hits—and knows what to do with the forces.

Every product that goes in and out of your store goes through the back room—and heavy, fast-moving equipment means big impacts back there. Our protective systems are engineered to absorb and deflect the forces from every hit protecting your space and your equipment.



Labor-saving

Time is money—let's save both.

More durable and far less labor intensive to install than concrete solutions, McCue back room systems install quickly and protect for years. Each product is designed to anchor to the floor, saving hours of installation time.

Space-accommodating

You've got the space, we've got the system to protect it.

Even with the best planning, there's always bound to be surprises—areas that need protection. Our products are designed to integrate into the space that you have. Within minutes, your maintenance team can have an entire McCue system set up and protecting your back room.

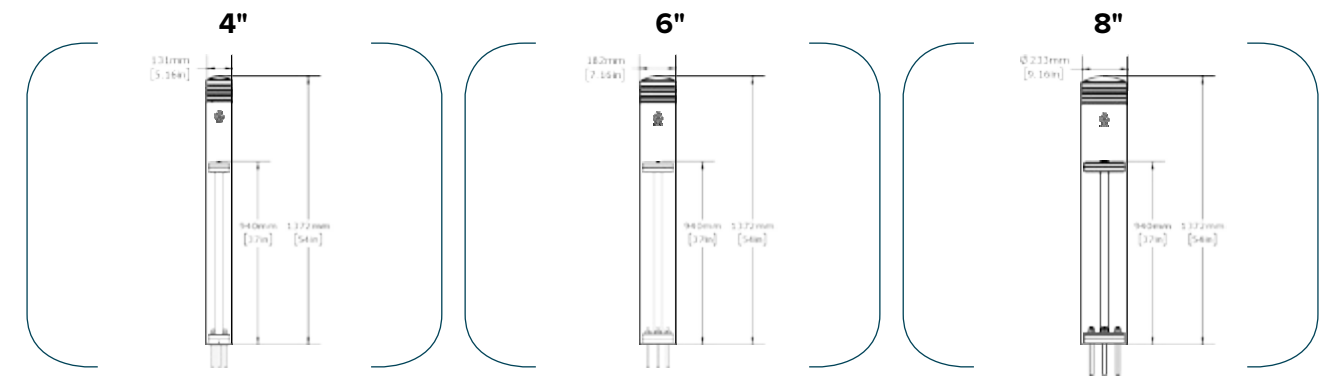


FlexCore® Bollard

Surface-Mounted, Shock-Absorbing Bollard

Say goodbye to the time-consuming, cumbersome process involved with installing core-drilled bollards. With no more holes to dig, concrete to pour or pipes to paint, the FlexCore Bollard installs in a fraction of the time and at much lower cost, without sacrificing strength.

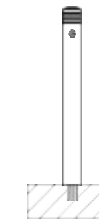
- A steel core and HDPE cover combine to disperse energy from strong hits
- Installs in minutes using only 3 concrete anchors—easily removed or relocated
- Patented, energy-absorbing design withstands impacts without damaging the concrete
- Never needs repainting and is available in yellow, black or custom colors to match your decor



4" FlexCore Bollard

CSFCB-4-COLOR

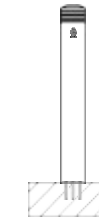
Includes: 4" core, 4" diameter shell, 1/2" anchors, locking pin



6" FlexCore Bollard

CSFCB-6-COLOR

Includes: 6" core, 6" diameter shell, 1/2" anchors, locking pin



8" FlexCore Bollard

CSFCB-8-COLOR

Includes: 8" core, 8" diameter shell, 5/8" anchors, locking pin



1/2" Concrete Anchor

HW-C-A12

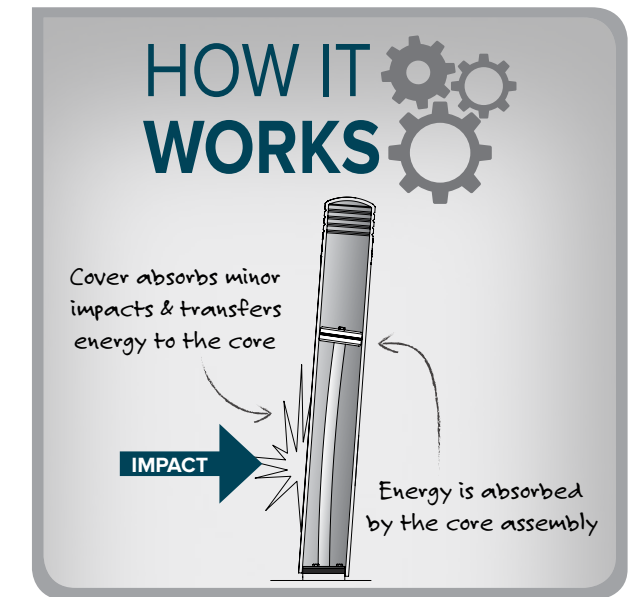
1/2" x 6 1/2" Hilti Anchor
Used for the 4" and 6" FlexCore Bollard



5/8" Concrete Anchor

HW-C-A58

5/8" x 6 1/2" Hilti Anchor
Used for the 8" FlexCore Bollard



4" FlexCore Bollard Cover

CSFCB-4-SHELL-BM-COLOR



6" FlexCore Bollard Cover

CSFCB-6-SHELL-BM-COLOR



Standard Colors

1 week lead for quantity 1-24.
Inquire for quantities 25 or more.



Custom Color Matching

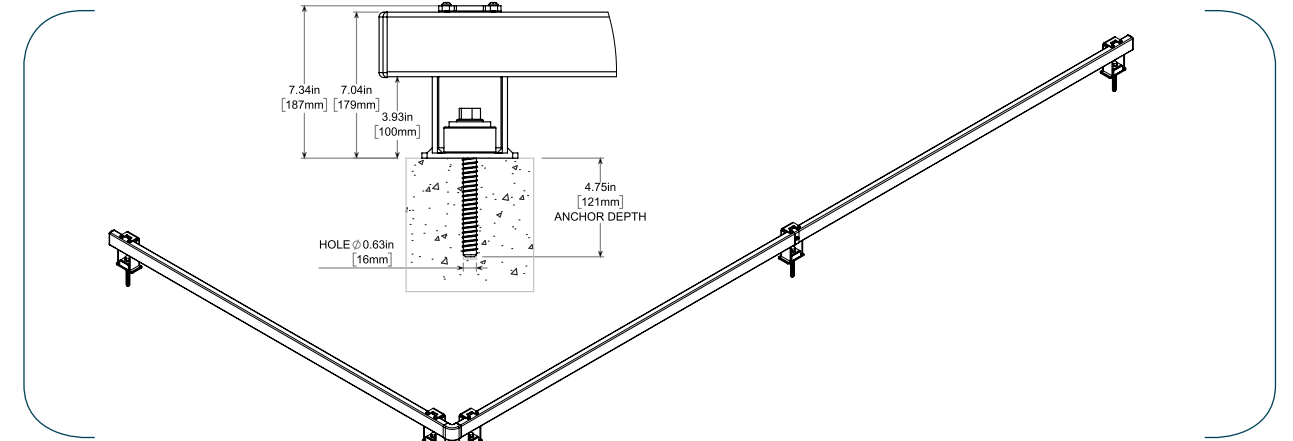
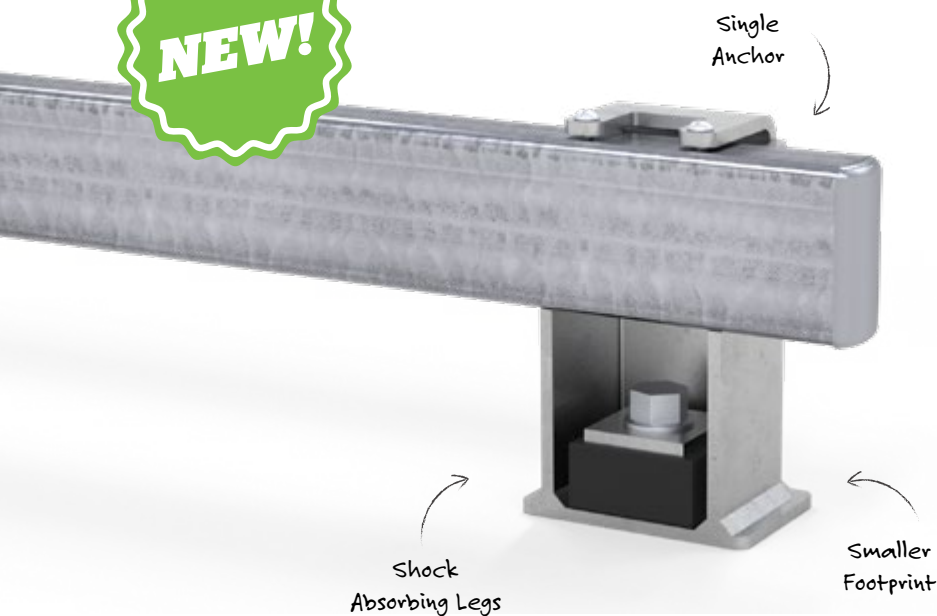
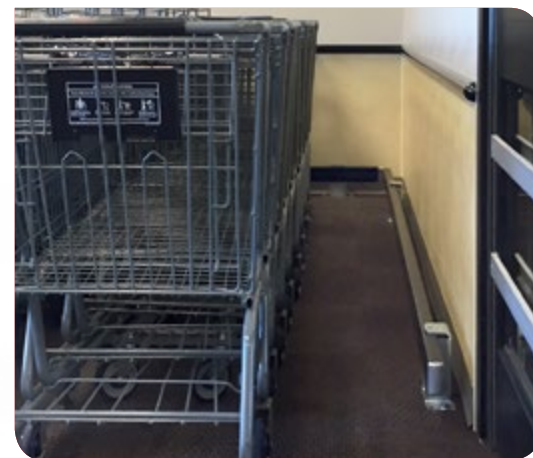
Pre-matched colors ship within 3 weeks. Otherwise allow 6-8 weeks for delivery. Minimums may apply.

Box Rail

Shock-Absorbing, Floor-Mounted Rail System

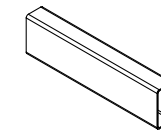
Heavy-duty protection for your back room and vestibule. Box Rail protects against the daily punishment of warehouse and stocking equipment. It offers retailers more options, applications and protection over concrete curbing.

- Modular design for any application with features that are easy to assemble and replace
- Impact-resistance tested to 600 ft.lbs
- Fixed to the floor with self-threading concrete anchors
- Great for use in vestibules, around fixtures, and in-store cart corrals
- Engineered to absorb energy with a shock-absorbing rubber core



Box Rail 8' Length

CSB-96
Zinc electroplated steel



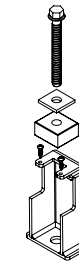
90° Corner

CSBC-90
Die cast aluminum 90° corner



Impact-Absorbing Leg Kit-7"

BR-K-LEG-7
7 inches tall, zinc electroplated steel
Hardware: Anchors & Dampers included



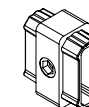
Domed End Cap

CSBE-00
Die cast aluminum



Box Rail Connector

CSBC
Die cast aluminum



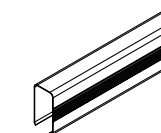
5/8 inch Concrete Anchor

HW-C-A58
6 inches long, self threading, & with anti-rotation serrations to prevent back-out
Hilti 5/8" x 6" LDT



Box Rail Cover

CSB-COVER-401
8' length, PVC-Black



Lead Times

3 week lead for quantity 1-24. Inquire for quantities 25 or more.

Rack Mounted Guard

Strap-On Impact Protection for Racking

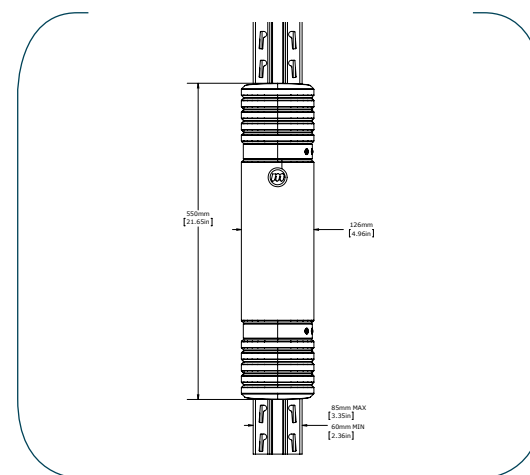
Operating vehicles around pallet and storage racking will always present the danger of accidental impact. Our Rack Mounted Guard is an easy-to-install, high-strength solution to protect your racking and its contents. The polyethylene body provides strength and durability to absorb impacts and is flexible to suit a variety of racking sizes. Just wrap the hook and loop straps around the racking leg and you're done.

- Polyethylene body flexes open to absorb impact energy
- Protects a variety of rack sizes from 2³/₈" (60mm) to 3³/₈" (85mm)
- Quick and easy installation using hook and loop fastener straps

Rack Mounted Guard Kit

RM-K-335-307

\$35.00



307
Yellow

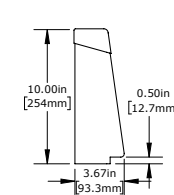
Standard Colors
4 week lead for quantity 1-24.
Inquire for quantities 25 or more.

Shock-Absorbing Rack Guard

Floor-level Impact Protection for Racking

Our heavy-duty Rack Guards have been designed to protect your pallet rack columns from the damaging blows of forklifts or pallet jacks. The half-round design provides maximum strength, promotes glancing blows, and fits multiple racking sizes.

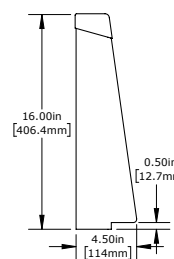
- Installs quickly with concrete anchor and sits close to the rack providing maximum strength without taking up extra space
- The zinc plating finish does not scratch off or rust so it always looks new



10"/250mm Rack Guard

CSRG-SHOCK-10-KIT

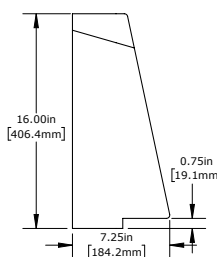
Materials: Zinc plated steel
Hilti Anchor included (1)



16"/400mm Rack Guard

CSRG-SHOCK-16-KIT

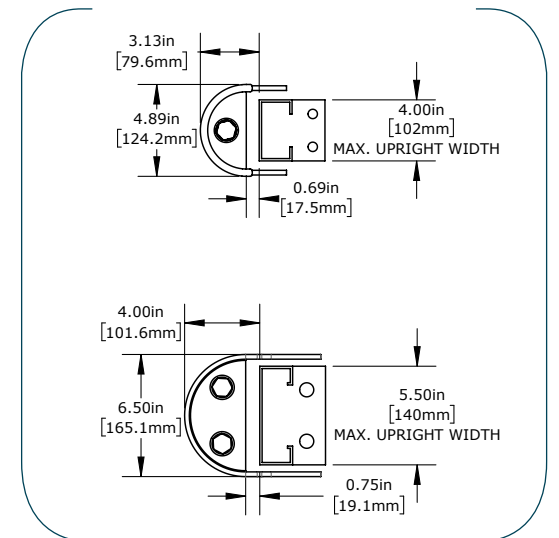
Materials: Zinc plated steel
Hilti Anchor included (1)



16"/400mm Rack Guard XL

CSRG-SHOCK-16XL-KIT

For racks wider than 4"
Materials: Zinc plated steel
Hilti Anchors included (2)



5/8" Concrete Anchor

HW-C-A58

5/8" x 6 1/2" Hilti Anchor



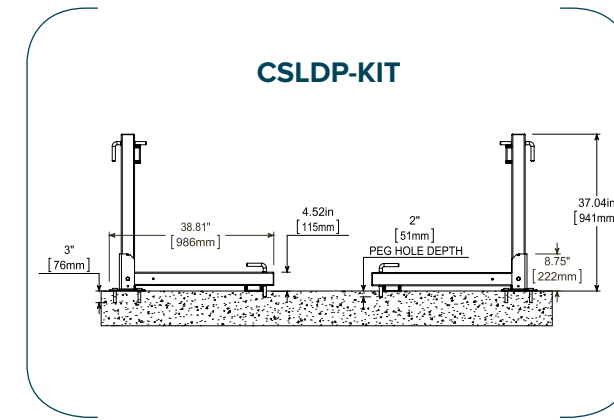
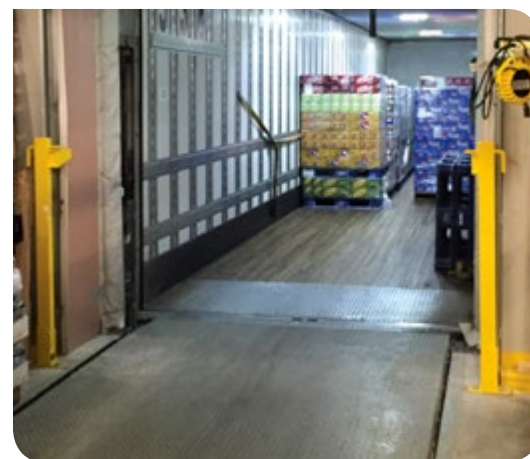
Patent 8915670

Loading Door Protector (LDP)

Impact Resistant Door Protection

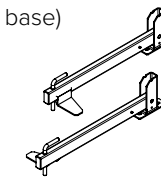
Are you tired of runaway pallets, stock carts or forklifts smashing the loading dock or back room doors? Our loading door protector is the two-in-one product that protects both the door panels as well as the door tracks.

- Heavy-duty steel construction with powder coat finish
- Protects overhead door when gate is down and the track when gate is up
- Fool-proof design requires protection to be in place to operate the door
- Available in safety yellow for high visibility



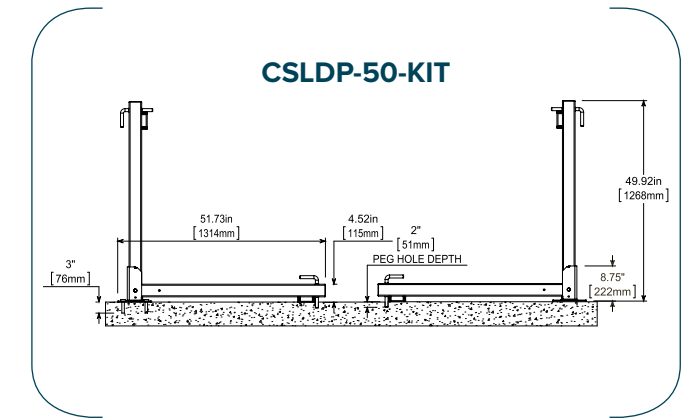
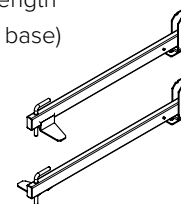
Loading Door Protector for 6'– 8' Doors CSLDP-KIT

Steel Construction with a Powder coat finish
Sold only as a set—left and right gates 36" length
(4) Concrete Anchors included, (2 for each base)
(2) Heavy Duty Flanges are included



Loading Door Protector for 8'– 10' Doors CSLDP-50-KIT

Steel Construction with a Powder coat finish
Sold only as a set—left and right gates, 50" length
(4) Concrete Anchors included, (2 for each base)
(2) Heavy Duty Flanges are included

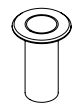


5/8 inch Concrete Anchor CS-HARDWARE-5830

3 inches long, self threading, and with anti-rotation serrations to prevent back-out
Red Head 5/8" x 3" LDT



Heavy Duty Flange CSFHD-10



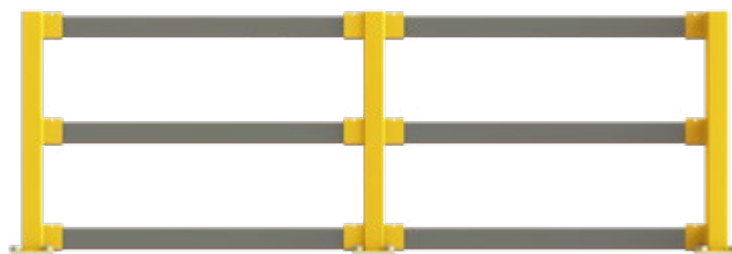
Standard Colors
2 week lead for quantity 1-24.
Inquire for quantities 25 or more.

Systems Protector

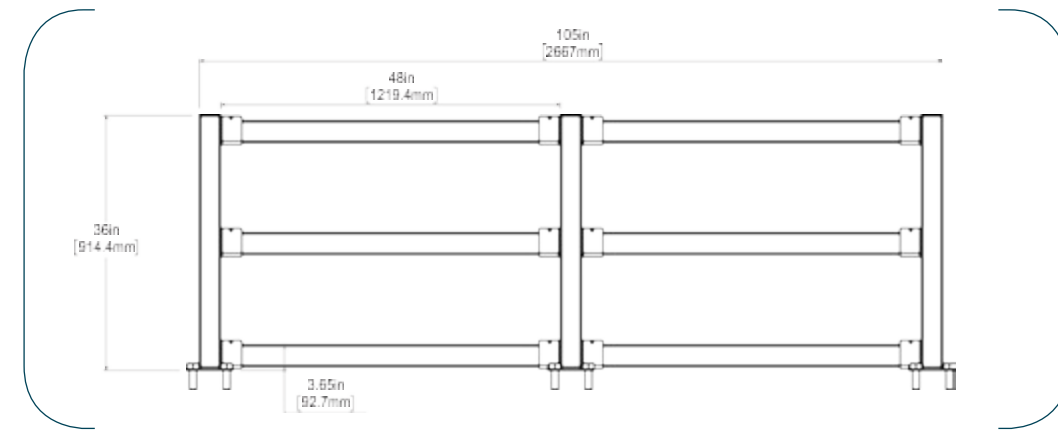
Protects Essential Systems While Maintaining Accessibility

Are you tired of runaway pallets, stock carts and forklifts banging up the electrical, plumbing, refrigeration and information systems that are critical to keeping your business running? Systems Protector provides reliable protection from damaging blows, saving you money on costly repairs, while allowing full access to your systems when needed.

- Strong: Heavy-duty steel construction with safety yellow powder coat finish is impact resistant to warehouse equipment
- Innovative: Steel cross members safely protect critical systems, yet easily removed to allow access for maintenance and service
- Speedy install: Self-threading concrete anchors eliminate the need for messy adhesives or cement — just drill and bolt to the floor



▶ Also available in 24" & 48" height options!



36" Uprights

End

CSSYP-36E-KIT

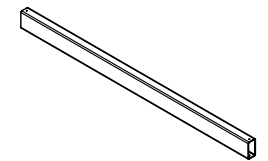
Hardware included—all uprights ship with 4 concrete anchors



Box Rail 8' Length

CSB-96

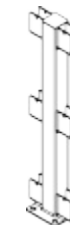
Zinc electroplated steel



Middle

CSSYP-36M-KIT

Hardware included—all uprights ship with 4 concrete anchors



5/8 inch Concrete Anchor

CS-HARDWARE-5830

3 inches long, self threading, & with anti-rotation serrations to prevent back-out
Red Head 5/8" x 3" LDT



Corner

CSSYP-36C-KIT

Hardware included—all uprights ship with 4 concrete anchors



24" & 48" Systems Protector Heights

Call for pricing and details.

307
Yellow

Standard Colors

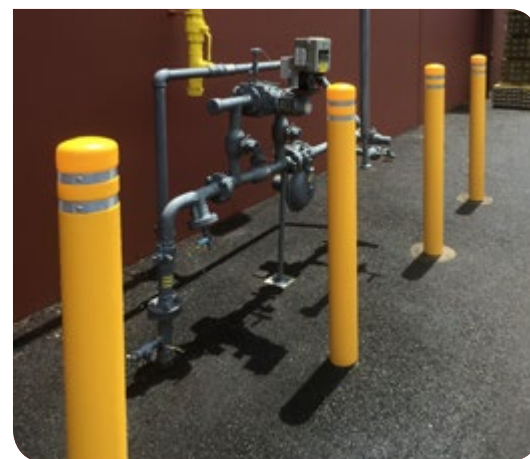
2 week lead for quantity 1-10.
Inquire for quantities 11 or more.

Post & Bollard Cover

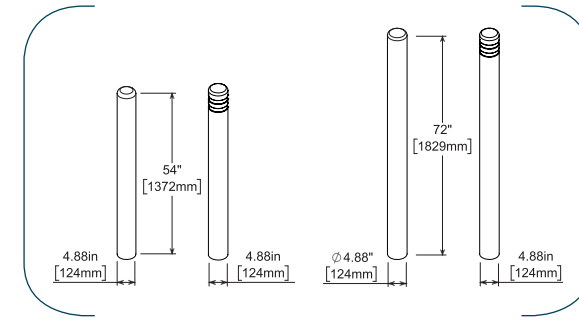
Plastic Post Cover

Cover up those unsightly posts and concrete bollards and eliminate constant repainting. Post Cover is constructed of impact-resistant HDPE. It's designed to cover your posts, while maintaining all the protection of pipe and concrete bollards.

- Post Cover keeps your bollards looking new
- Eliminate the need for scraping, painting and repainting
- Removable for easy cleaning



▶ **Reflective tape option now available!**



4" Post Covers

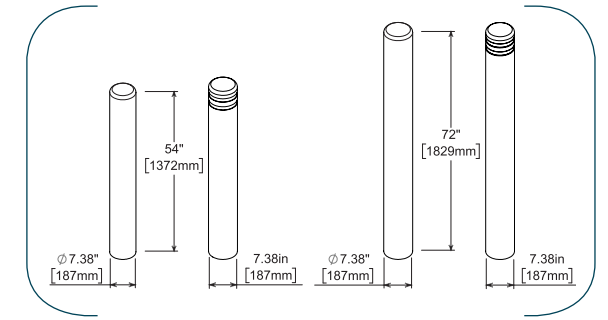
54" Tall Post Cover

For posts with 4.5" outer diameter
Foam tape included



72" Tall Post Cover

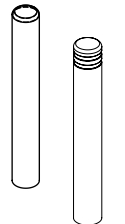
For posts with 4.5" outer diameter
Foam tape included



6" Post Covers

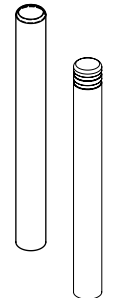
54" Tall Post Cover

For posts with 6.625" outer diameter
Foam tape included



72" Tall Post Cover

For posts with 6.625" outer diameter
Foam tape included



EASY INSTALLATION

- 1
- 2
- 3

307 Yellow Standard Colors
3 week lead.

Custom Color Matching
Pre-matched colors ship within 3 weeks. Otherwise allow 6-8 weeks for delivery. Minimums may apply. Call for pricing.

BECAUSE THE CUSTOMER EXPERIENCE BEGINS AND ENDS IN YOUR PARKING LOT.

Carts are drifters, eager to take off on the slightest breeze or incline—and always headed where they don't belong. We ensure customers put them in their place, so they're not denting cars or taking up valuable parking spaces. Our highly visible surface-mounted solutions are engineered for durability, space optimization and protection—all focused on your bottom line.

Savings

Contain the carts, increase productivity.

Effective cart return stations immediately reduce operation costs. McCue cart return stations are designed for easy visibility, which increases customer use. That means your employees spend less time gathering carts and more time being productive. It also means carts won't be blowing across the parking lot and damaging cars.



Strength

Nature can be tough, we can be tougher.

Our covered cart return stations are built to withstand harsh environmental conditions and road salt used in cold climates. They won't rust, fade or corrode, and are resilient against bumps from cars—protecting the return station and your customers' cars.

Selling

Extend your brand into the parking lot.

McCue cart return stations are the first thing customers see when they arrive at your store and the last thing they see when they leave. Our signage systems give you a permanent billboard for promotional messaging. Posters can be switched out easily to make the most of special offers—or even signs reminding customers to bring in their reusable shopping bags.

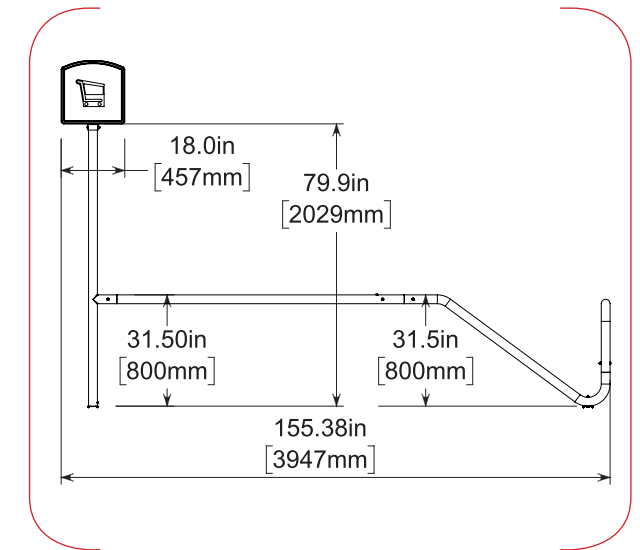
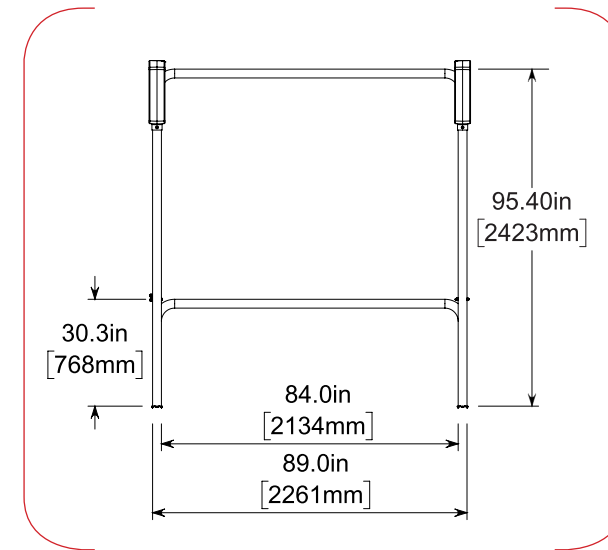


CartMagnet™ Cart Corral

Open Frame Cart Return Station

CartMagnet is attractive to shoppers and captivating to carts. This highly-visible and brand-enhancing cart corral is the cost-effective solution to stray shopping carts taking up valuable parking spaces.

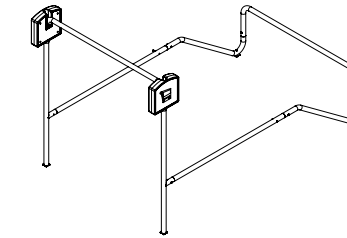
- Available with or without bumper
- Increase Cart Return: Colorful front sign is easy to see over mini-vans and SUVs. Cart return is easier for customers and cart retrieval is easier for retailers
- Eliminate Tripping: Top-lock construction stabilizes the cart corral overhead so there is no ground frame to trip customers
- Quick Setup: The modular galvanized steel frame allows for quick installation or relocation and it resists rust
- Cleats at every corner minimize shifting
- Designed to fit into any standard parking space



CartMagnet Standard

CM-3S-COLOR

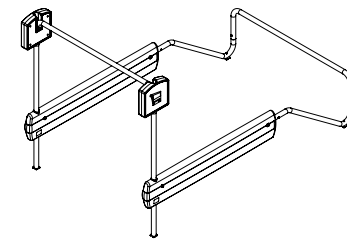
Material: Galvanized Steel, High Density Polyethylene



CartMagnet Bumper

CM-3B-COLOR

Material: Galvanized Steel, High Density Polyethylene



Optional Custom Accessories

Call for pricing and details.

- Front Sign
- Additional Side Sign
- Side Bumpers
- Lane Divider
- Ground Frame



Stock Colors
Available to ship within 3 weeks.



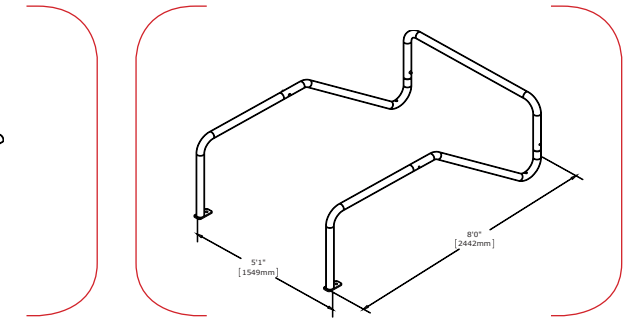
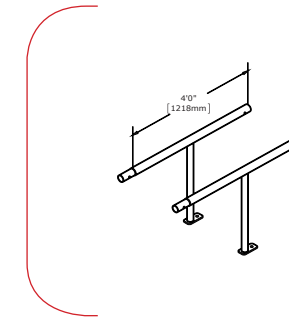
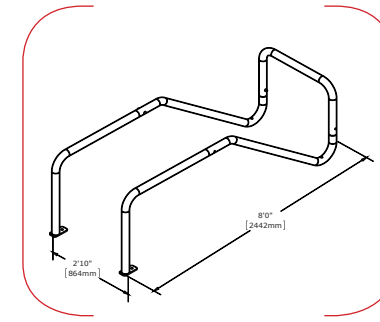
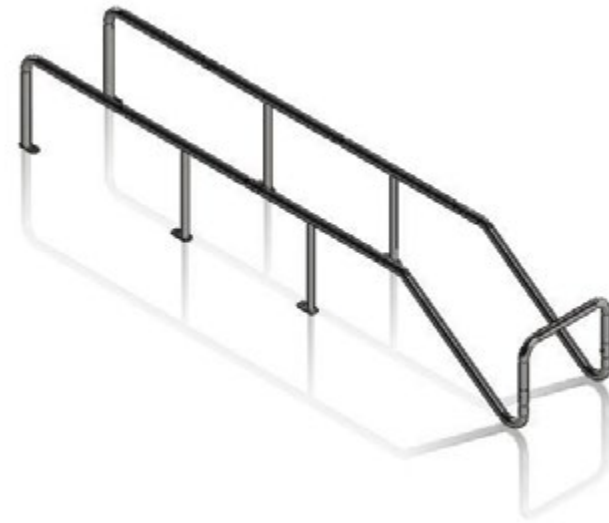
Custom Color Matching
50 unit minimum. Call for quote.

CartMagnet® Sidewalk

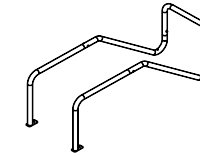
Sidewalk Cart Storage

If you have a store with limited outdoor or indoor space and no place to corral your shopping carts, then the CartMagnet Sidewalk unit is the ideal cart return station.

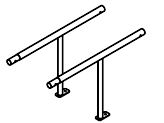
- Easy to install
- Modular design offers whatever length you need
- Galvanized steel construction
- Doesn't take up entire sidewalk area
- Simplified cart storage



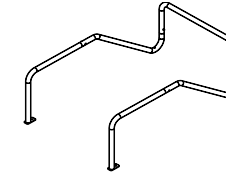
Single Cart Width
CMP1-SIDEWALK-8
8' length holds 6 carts



4' Extension Kit
CMC-SIDEWALK-EXTENDER-KIT
Set of two 4' extension sections combine to add length to base units in 4' increments
Each extension holds approximately 4 (single width) or 8 (double width) additional carts
(2) Concrete Anchor kits included



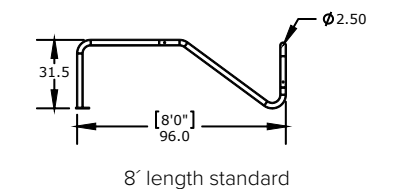
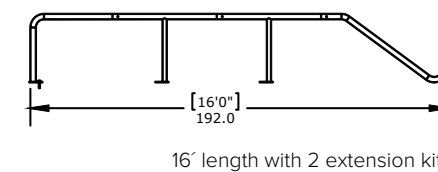
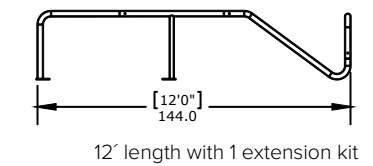
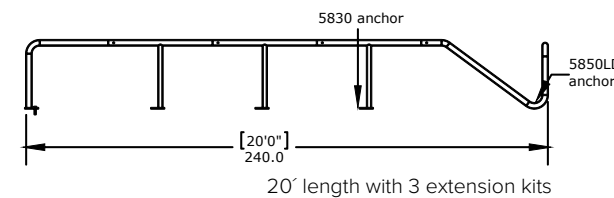
Double Cart Width
CMP2-SIDEWALK-8
8' length holds 12 carts



5/8 inch Concrete Anchor, 3"
CS-HARDWARE-5830
3 inches long, self threading, and with anti-rotation serrations to prevent back-out



5/8 inch Concrete Anchor, 5"
CS-HARDWARE-5850LDT
5 inches long, self threading, & with anti-rotation serrations to prevent back-out
Red Head 5/8" x 5" LDT



Lead Times
Available to ship within 3 weeks.

CartPark® Bumper

Open Cart Return Station with Bumpers

Chipping a car door on a cart return station is not the way to begin a positive shopping experience. That's why the sides of CartPark Bumper are made of one big bumper. The brightly-colored dual signs are situated at the front of the return station, high enough to be seen over vans and SUVs.

- Highly-visible, colorful signs are seen over mini-vans and SUVs, increasing voluntary shopping cart return
- Patented top-lock construction stabilizes the cart return station overhead so there is no ground frame to trip customers
- Snag-free storage area provides smooth cart return and cart pickup
- Molded side bumpers protect car doors from dings and dents, reducing damage claims
- Simple design assembles in minutes

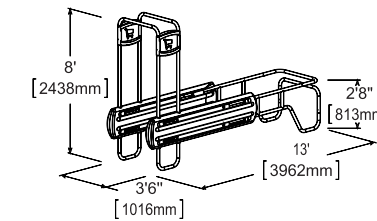


Single Entry Unit

Materials: Galvanized steel pipe & HDPE
Standard signs include screened shopping cart graphic

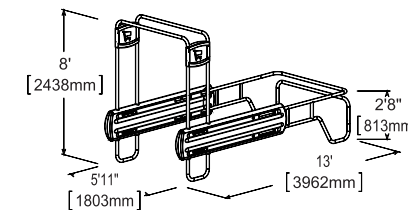
Single Cart Width with Barriers

BP1-COLOR
Cart Capacity: 11



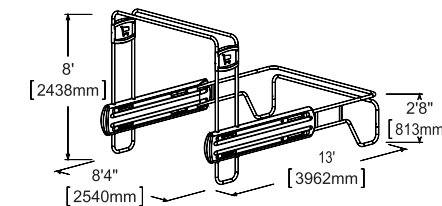
Double Cart Width with Barriers

BP2-COLOR
Cart Capacity: 22



Triple Cart Width with Barriers

BP3-COLOR
Cart Capacity: 33

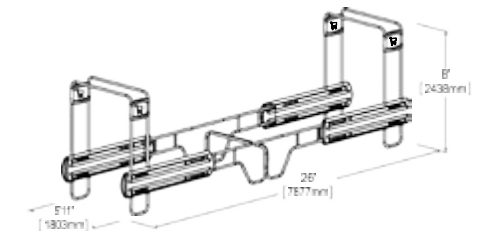


Double Entry Unit

Materials: Galvanized steel pipe & HDPE
Standard signs include screened shopping cart graphic

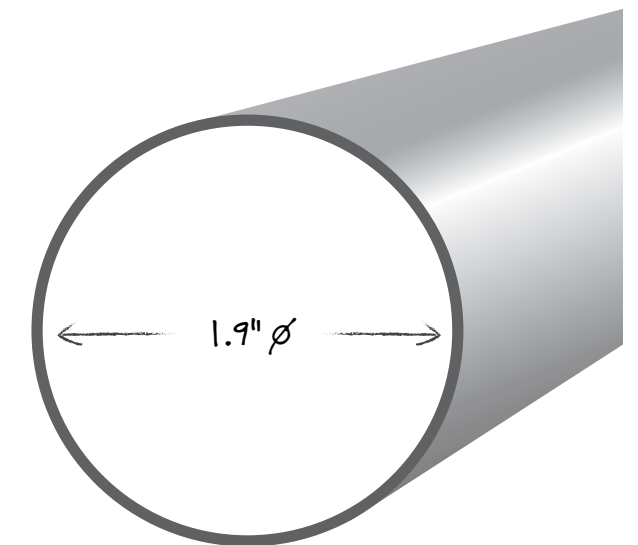
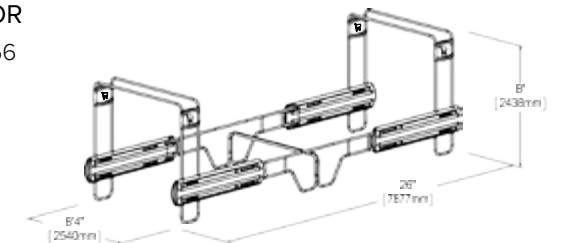
Double Cart Width with Barriers

BP2-BB-COLOR
Cart Capacity: 44



Triple Cart Width with Barriers


BP3-BB-COLOR
Cart Capacity: 66



Replacement Parts

Please call for part numbers and pricing when ordering replacement parts for older model cart return stations.

214 Forest Green	521 Red	Stock Colors Available to ship within 3 weeks.
716 Blue	621 Natural	

 Custom Color Matching
Minimums will apply. Allow 6-8 weeks for delivery.

CartPark® Bumper Accessories

Add-Ons and Accessories for Cart Return Stations

We offer a variety of CartPark accessories to satisfy every parking lot's needs—standard and custom signs, and custom graphics.



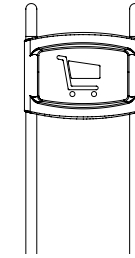
Plastic Side Sign with Cart Icon

BPC-SIGN-BM-COLOR

Replacement sign for the BumperPark Cart Corrals



Stock Colors
Available to ship within 3 weeks.



Additional Side Sign with Hardware

BPA-SIGN-KIT

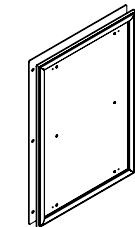
Attaches below standard blow-molded plastic sign. Standard aluminum white powder coated sign. Standard text printed in black on one side. Custom graphics available, call for details (15"L x 15"W).



Graphic Panel

BPA-GPH

2-Sided snap sign frame with lock and hardware. Attaches below standard shopping cart sign. Call for details.



Standard Front Sign with Hardware

BPA-FSIGN-KIT

Attaches to front cross bar. Pre-coated exterior aluminum sign. Standard sign text is printed in black and on one side. Custom graphics available, call for details. For BP3 & BP2 units only (94.4"L x 13.7"W and 64.9"L x 13.7"W)

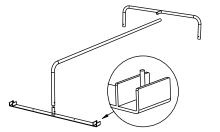


Lane Divider Kit for Double Cart Width

BP2-LD-KIT

Material: Galvanized steel pipe

Packed (1) Modified cross bar, (1) Modified ground frame with hardware

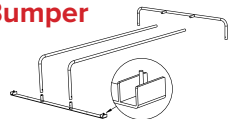


Lane Divider Kit for CartPark Bumper Triple Cart Width

BP3-LD-KIT

Material: Galvanized steel pipe.

Packed (1) Modified cross bar, (1) Modified ground frame with hardware

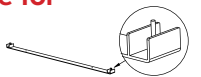


CartPark Bumper Ground Frame for Double Cart Width

BPC-GF2 (for BP2)

Material: Galvanized steel

Packed (1) Ground frame with hardware

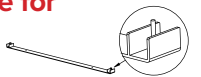


CartPark Bumper Ground Frame for Triple Cart Width

BPC-GF3 (for BP3)

Material: Galvanized steel

Packed (1) Ground frame with hardware



Lead Times

3 week standard lead time.



Custom Color Matching

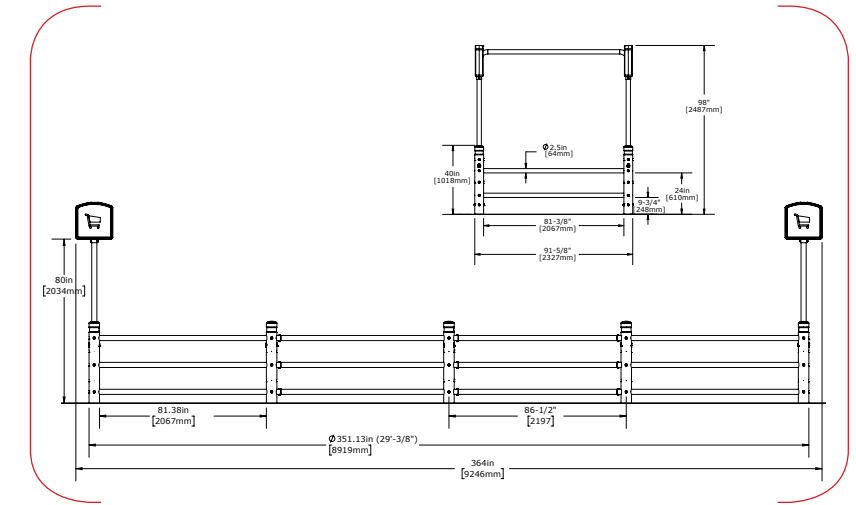
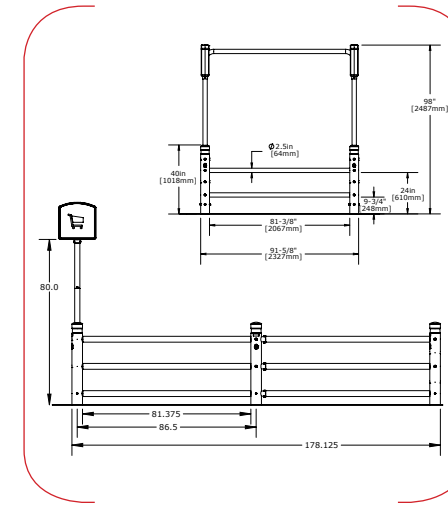
Minimums may apply. Allow 6-8 weeks for delivery.

Bollard CartMagnet™

Open Frame Cart Return Station

Designed and engineered for exceptional durability, the Bollard CartMagnet dramatically increases voluntary cart return and can easily be seen over the highest SUVs and mini-vans. We've eliminated tripping hazards by removing ground frames. We've added strength and stability to the unit with top crossbars and stop bars.

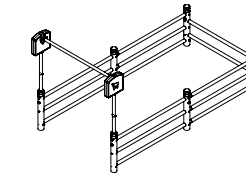
- Eye-catching new design—Bollard & rail construction are strong and offer a modern aesthetic to your parking lot
- Installation—Installs quick with standard hardware and tools
- Stays in Place—Fixed to the ground so it will stay right where you want it.



Bollard CartMagnet

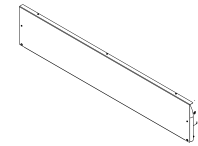
BCM-3S-401

Single-sided cart entry.
Material: HDPE & galvanized steel
36 Cart Capacity



Custom Graphics

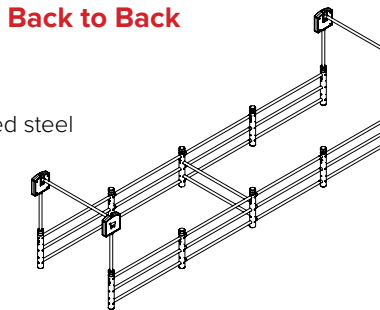
Call for pricing and details



Bollard CartMagnet - Back to Back

BCM-3S-BB-401

Double-sided cart entry
Material: HDPE & galvanized steel
72 Cart Capacity



401
Black

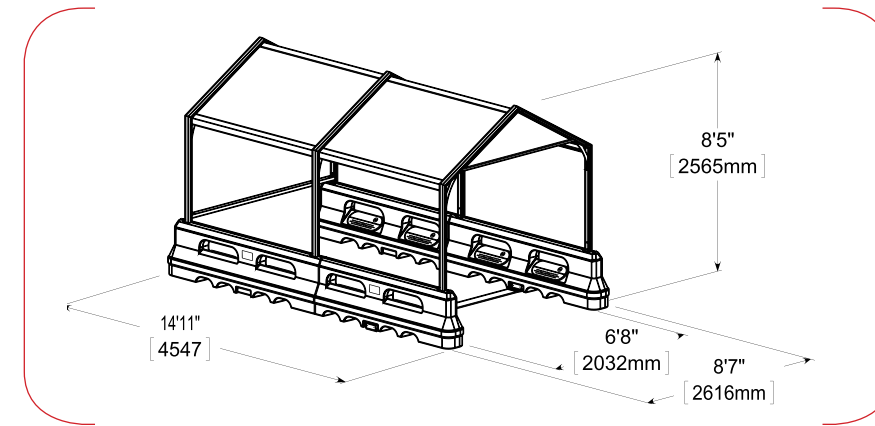
Standard Colors
3 week lead.

CartPark® Covered

Standard Covered Cart Return Station

CartPark Covered cart return stations make a positive first impression. Their colorful, brand-enhancing design helps welcome customers and increase cart return.

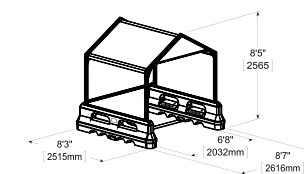
- High-impact polyethylene plastic barriers are easy on car doors, clothing and little hands, reducing damage and injury claims
- Patented surface-mounted barrier design eliminates the need to drill holes in your parking lot and allows for flexibility in placement
- Top front panels offer retailers a space to extend brand identity into the parking lot



CartPark Covered, 2

SSC2B-COLOR

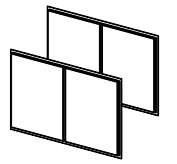
All roof and peaked front panels included
Single-sided cart entry
Cart Capacity: 15



Side Panel

SSCC-SIDEPANEL-COMPLETE

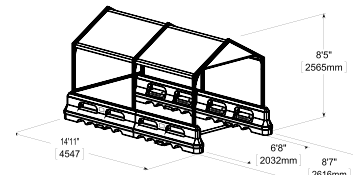
One weather panel per barrier
Material: Clear PETG Sheets (79.3\" L x 42\" W)
Complete with aluminum weather panel support and hardware



CartPark Covered, 4

SSC4B-COLOR

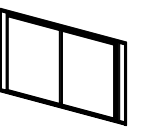
All roof and peaked front panels included
Single-sided cart entry
Cart Capacity: 36



End Panel

SSCC-ENDPANEL-COMPLETE

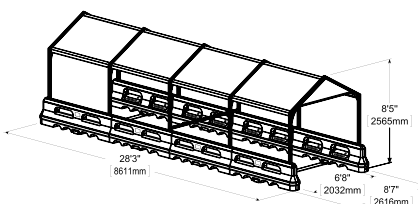
Material: Clear PETG Sheets and hardware (91.75\" L x 43.5\" W)
End weather panel comes with an aluminum frame for use with CartPark Covered 2 and 4 units only



CartPark Covered, 8

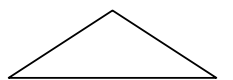
SSC8B-COLOR

All roof and peaked front panels included
Double-sided cart entry
Cart Capacity: 72



Custom Graphics

Call for pricing and details.



Replacement Parts

Please call for part numbers and pricing when ordering replacement parts for current model cart return stations.



Stock Colors

Available to ship within 3 weeks for 1-9 units. Allow 4 weeks for 10+ units.



Custom Color Matching

Minimums may apply. Allow 6-8 weeks for delivery.

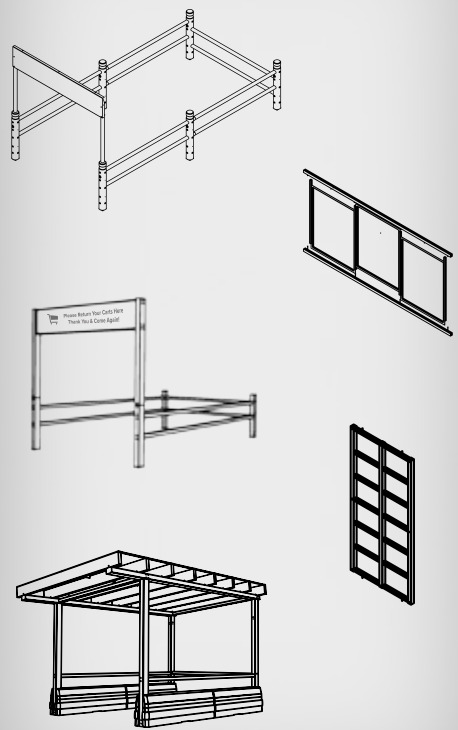
Personalized Cart Corral Design

Bring Your Dream Cart Return Station to Life!

We design high quality cart corrals for every outdoor need — their colorful, brand-enhancing design helps increase cart returns, are built with the best material to withstand harsh weather and can come with custom signage to extend your brand into your parking lot. Make a positive first impression with a personalized cart corral.



DID YOU KNOW?



Many of our cart corrals started from custom customer inspiration — and we build from there!

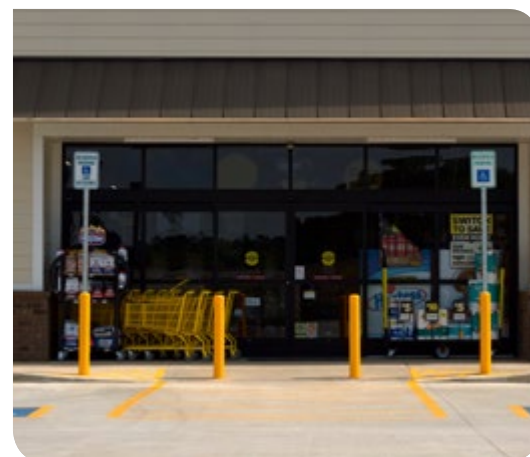
Have a vision in mind for a future Cart Corral?
Let us work with you to make it a reality!
Contact us at 800.800.8503 to get started.

CrashCore Bollard

Crash-Tested ASTM F3016 Safety Bollard

The CrashCore Bollard is revolutionizing storefront safety because it is the first bollard that can be installed in one night and is ASTM F3016 certified to stop vehicles from barreling through your buildings. With CrashCore not only do your storefronts look great, but more importantly you get peace of mind knowing your people are safe.

- Crash-tested, proven to stop a 5,000lb vehicle traveling at 20mph
- Its shock-absorbing core absorbs impact energy above grade, allowing for a small, core-drilled foundation underground — making for a quick & easy installation
- Looks good and can match your brand with our different cover options



Endless cover options to match your brand



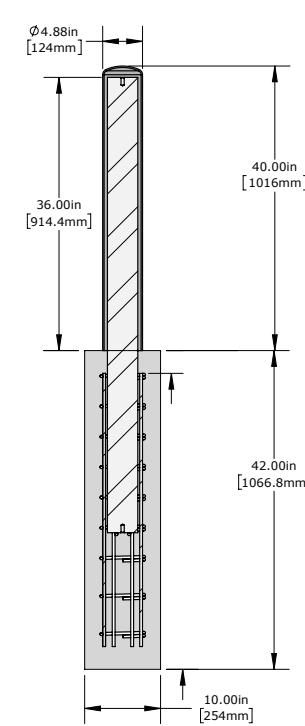
Not just a pipe in the ground — Solid steel core, elastomer and shell work together to absorb energy

Easy core drill installation — We even provide the rebar!

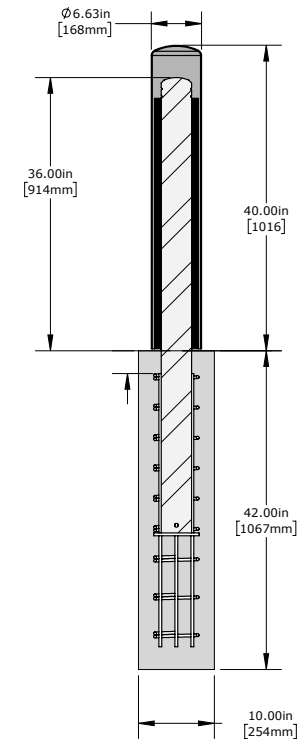


▶ Learn more about CrashCore at www.mccue.com/crashcore

4" CrashCore



6" CrashCore



4" Plastic CrashCore Bollard

2B601307

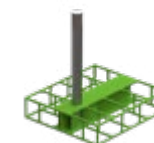
4" x 40" HDPE Post Cover with S20 Steel Core & S20 Rebar Cage



6" Stainless Steel CrashCore Bollard

2B600905

6" x 40" Stainless Steel Post Cover with S20 Steel Core & S20 Rebar Cage



Can't dig deep? No Problem. Our shallow cage option sits only 12" below grade. Call for details.

Lead Times

1 week lead for quantity 1-49. Inquire for quantities 50 or more.

Custom Options Available

Cover options and sign posts available upon request. Call for details.



Standard Colors
3 week lead.



Custom Color Matching

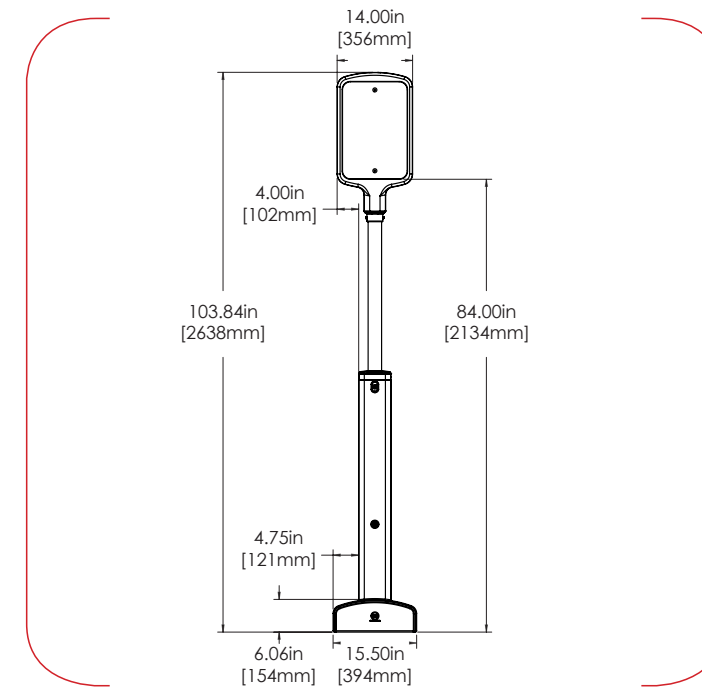
Pre-matched colors ship within 3 weeks. Otherwise allow 6-8 weeks for delivery. Minimums may apply. Call for pricing.

BumperSign

Flexible, Surface-Mounted Sign Post

No more bent, unattractive signs. Finally a sign engineered for strength and safety, designed for style, and fits ADA height requirements across the country. This versatile sign can mark anything from expectant mothers and visitor parking to curb side pick up. With its protective cover and hidden shock-absorbing core, the BumperSign will carry your brand from the store to the parking lot.

- Absorbs impact energy and deflects away from vehicles
- Easy installation with no core-drilling or concrete needed
- Maintenance-free with adjustable height for a consistent clean appearance



BumperSign Kit

BS-V2-COLOR

Hardware included.
Placard not included.



Standard Accessible Parking Placard

15AB034



Van Accessible Parking Placard

15AB035



Custom Placard Options

Call for pricing and details.



Standard Colors
3 week lead.

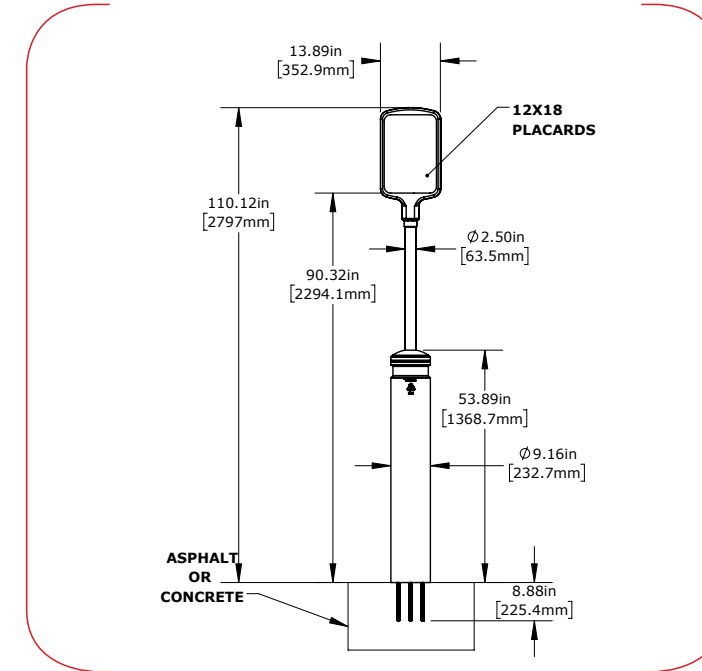
Sign templates available at McCue.com

BumperSign 8R

Flexible, Surface-Mounted Sign Post

The BumperSign, a flexible signpost that can be installed in asphalt without any concrete is not now round! The same amazing features as the original BumperSign now available in a more traditional look. The BumperSign is engineered to handle the bangs and bumps for people parking with its patented shock-absorbing core.

- Absorbs impact energy and deflects away from vehicles
- Easy installation with no core-drilling or concrete needed
- Maintenance-free with adjustable height for a consistent clean appearance



Paint-free, versatile sign for a consistent, clean appearance



Flexes on impact

Meets ADA requirements across the United States

Quick & easy installation in concrete or asphalt

BumperSign Kit

BS-V2R-COLOR
Hardware included.
Placard not included.

Extend your brand into your parking lot

Anchor system makes installation easy

Cut the post to any height

Shock-absorbing core deflects on impact

Standard Accessible Parking Placard

15AB034



Van Accessible Parking Placard

15AB035



Custom Placard Options

Call for pricing and details.



Standard Colors
3 week lead.

Sign templates available at McCue.com

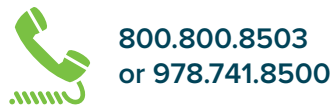
How To Order

For the most up to date information on everything McCue, check us out on our website and social media platforms.

Customer Care

Our customers are the heart of our organization—you deserve to be handled with care. Our Customer Care Team is ready to help with your order needs.

We are available Monday through Thursday from 8:30 am to 5:30 pm EST and Friday from 8:30 am to 5:00 pm EST. Call, fax, email or live chat with us, and a Customer Care Representative will be happy to help with your order.



800.800.8503
or 978.741.8500



978.741.2542



customer@McCue.com



Live Chat at McCue.com



We're social, follow us!

Our Customer Care Team



Bumper Custom Color Matching

101	Gray	533	Raspberry
102	Fashion Gray	562	Mango
105	Steel Gray	601	Beige
108	Oyster Gray	602	Brown
111	Silver	604	Light Caramel
123	Smoke Gray	609	Putty
127	Shy Gray	619	Shell
201	Green	661	Wheat
246	McCue Green	678	Mink
252	Lichen Green	701	Blue
310	Mellow Yellow	713	Deep Blue
401	Black	732	Sapphire
501	Red	739	Majestic Purple
503	Tomato Red	801	White
504	Port Red		

Office Hours

We are available Monday through Thursday from 8:30 am to 5:30 pm EST and Friday from 8:30 am to 5:00 pm EST. Call toll-free in the Continental USA (800) 800-8503 or (978) 741-8500, or e-mail us at customer@McCue.com. A knowledgeable Customer Care Representative will be happy to help you. After hours, call the same number and leave a message. A Customer Care Representative will contact you promptly the following business day.

Terms

All orders are shipped FOB Origin. Freight charges are prepaid and added to the invoice, unless otherwise requested. Taxes, duties and fees for customs are the responsibility of the customer. Our payment terms are Net 30 days from the date of invoice. All specifications and prices are subject to change without notice.

Payment Options

For your convenience, we also accept Mastercard, Visa and American Express. All prices in US dollars.

- Credit Account – 30 days subject to suitable credit ratings and references
- Electronic Bank Transfer
- Credit Card Payment

Setting up an Account

We can usually arrange for credit quickly and easily. All you need to do is fill out our credit application which requests all of the usual business, bank and credit information. Go to McCue.com/new-account to get started.

Warranties and Guarantees

McCue warranty information can be found at McCue.com/warranty

Colors represented may vary due to screen and print settings. Please call to receive actual color matched chips.

Return Policy

We want you to love your McCue product. If you are not fully satisfied with your purchase, you can apply for a refund within 14 days of receipt of goods. **Returns will only be accepted with prior authorization from a McCue Customer Care representative.**

Returned products must be suitably packaged and in a condition fit for re-sale. Returns will be subject to a 15% handling and administration charge and shipping is the responsibility of the customer. We, unfortunately, cannot accept return of custom color or cut products. If you have questions regarding our policy or feel that you have a unique situation, please contact a McCue Customer Care Representative to discuss. We're committed to working with you.

QuickShip

Get what you need faster!
It's easy, just look for the QuickShip icon to confirm faster lead times.



©2019 McCue Corporation. Printed in the USA.

All information, specifications and illustrations contained in this catalog are based on the latest product information available at time of publication. Details are subject to change at any time without prior notice. This document must not be copied, reprinted or reproduced in any form, either wholly or in part, without the written consent of McCue Corporation.

McCue Corporation

Peabody, MA 01960, USA

+1 (800) 800 8503

customercare@mccue.com

McCue UK, Europe & Middle East

Milton Keynes, United Kingdom

+44 (0)1908 365 511

uksales@mccue.com

McCue Asia

迈客(厦门)有限公司

Xiamen, Fujian, China

+86-592-2200790

mccue.com

